



W ROGUE VALLEY M MESSENGER

THE ANNUAL GIVE GUIDE Support Local Nonprofits!

**Giving Tuesday,
December 3 at
ScienceWorks,
page 4**



SOUND

Family Rockers! Turn It Up!

SCREEN

Wild & Scenic Festival! Wowzers!

FOOD

Ashland Culinary Festival. Yum!

36th Annual Ashland Interfaith Thanksgiving Celebration

THEME: LOVE YOUR ENEMY?

The enemy is the ultimate other, and for many of us, the ultimate test of our spirituality. It's much easier for us to love a friend or even a theoretical enemy than it is to love an actual enemy who means us harm.

Many faith traditions have faced persecution throughout their history from one enemy or another, and this is a topic that must be addressed again and again.

This year we have asked our presenters to speak about what their tradition offers in the face of hostile opposition. What constitutes an enemy? What measures are justified in relation to the enemy? If so, when? If not, what does your tradition offer in its place?

WHEN: Thanksgiving Morning: Thurs., Nov. 28th, 2019, 10-11 am

WHERE: Wesley Hall, behind the First Methodist Church in Ashland 175 North Main Street, Ashland, Oregon 97520

WHO: You and a few hundred others, plus inspired leaders from many spiritual traditions such as Native American, Christian, Jewish, Muslim, Hindu, Buddhist, Baha'i, Pagan, Sufi, New Thought, Quaker, Taoist, and more...

WHY: To give thanks for spiritual diversity and our common ground in an atmosphere of respect for all during challenging times.

Spread the warmth: Sleeping bags, hats, scarves, gloves and wool socks will be collected for the homeless at this event. Anything you can donate is appreciated.

Always free and open to everyone (food will be served)

Share the joy of theatre!

Gift Certificates and Gift Memberships are perfect for the holidays.

Oregon Shakespeare Festival.
800.219.8161 | osfashland.org

ASHLAND FOOD CO+OP EST. 1972

grateful TO BE YOUR CO+OP

FROM OUR BAKERY TO YOUR TABLE!

Ready to heat & serve!

We'll cook. You feast.
Relax with friends and family & enjoy our homemade Thanksgiving meals!

Orders will be accepted until Sunday, November 24th at 8pm. More information at www.ashlandfood.coop

Southern Oregon's first and only certified organic retailer

Open daily 7AM to 9PM
237 N. First St., Ashland, OR • (541)482-2237 • www.ashlandfood.coop

THE ROGUE VALLEY MESSENGER

The Rogue Valley Messenger
PO Box 8069 | Medford, OR 97501
541-708-5688
roguevalleymessenger.com
info@roguevalleymessenger.com

THE BUSINESS END OF THINGS
WEB MASTER Tammy Wilder
OUR FINANCIAL WIZARD (Taking applications) Coleman Antonucci
DISTRIBUTION Sasha Armstrong

OUR WORDSMITHS, ETC.
PUBLISHER & EDITOR Phil Busse
MANAGING EDITOR Sara Jane Wiltermood
PRODUCTION MANAGER Donna Brosh
CALENDAR EDITOR Micah McCaw
COLUMNISTS Rob Breznsky, Dr. Dan Smith, Dr. Cory Tichauer, Dr. Margaret Philhower, Tanya Shelander, Matt Jones
FREELANCERS Catherine Kelley, Vanessa Newman, Jen Robison, Alan Armstrong and Nick Blakeslee

GET IN TOUCH
MAIL info@roguevalleymessenger.com
EVENTS events@roguevalleymessenger.com
ADVERTISE advertise@roguevalleymessenger.com

SALES DEADLINE: 5 pm Thurs
EDITORIAL DEADLINE: 5 pm Thurs
CALENDAR DEADLINE: 12 pm Thurs
CLASSIFIED DEADLINE: 4 pm Thurs
Deadlines may shift for special/holiday issues.

On the Cover:
Rogue Valley Farm to School Harvest Breakfast,
photos by: Todd Bartush

CONTENTS

DRINK LOCAL
Ashland Culinary Festival happens every year in November, an event that presents locals chefs, professionals and amateurs alike, in a competitive environment that tests the skills of all those involved. Four years ago, they added the mixology side of competition.



page 23

GO HERE
Southern Oregon locals are lucky to have more than one place to legally cut their own Christmas trees. We point your sleighs in the direction of a few.



page 28

SCREEN
Peek into the worlds of newts, German browns, ice sheets and grizzlies at the 7th annual Wild & Scenic Film Festival "On Tour" on November 8.



page 24

DON'T SMOKE
One hundred sixty-one pages of new rules just took a pot-shot (pun intended) at our burgeoning southern Oregon hemp industry.



page 30

Feature	5	Screen	24
Our Picks	12	Go Here	27
Live Music and Nightlife	13	Go Here	28
Events	16	Wellness	29
Sound	18	Don't Smoke the Messenger	30
Culture / Artwatch	21	Free Will Astrology	30
Food & Drink	22-23	Rec Room	31

Vital Earths

SOIL BUILDING PRODUCTS AND ORGANIC FERTILIZERS

We Deliver Bulk Orders Directly to Your Garden!

(541) 879-3530
VitalEarthsProducts.com

LOCALLY HANDMADE ARTS & CRAFTS

GIFTS & FESTIVITIES
LIVE MUSIC
FOOD

LITHIA ARTISANS 2019 Christmas Faire

THANKSGIVING WEEKEND
NOVEMBER 29, 30 & DEC 1

FRIDAY: 10AM - 7PM
SATURDAY: 10AM - 6PM
SUNDAY: 11AM - 4PM

HISTORIC ASHLAND ARMORY
CORNER OF OAK & B IN ASHLAND
2 BLOCKS DOWN FROM MAIN

Support our community by buying gifts from fine local artisans!

FINE LOCAL ARTS & CRAFTS • FOOD • LIVE MUSIC

LithiaArtisansMarket.com Visit us on facebook! <http://www.facebook.com/LithiaArtisansMarket>



Tis the season of . . .

GIVING

The Messenger presents Giving Tuesday
Southern Oregon's only in-person meet, greet and support event

Tuesday, December 3
5 - 8 pm
ScienceWorks in Ashland

Sponsored by:



FEATURE

Won't You Be Our Neighbor?

Introducing This Year's Give Guide

For the past five years, the *Messenger* has published an annual Give Guide, a listing of local nonprofits, each which is doing important work to make our communities safer, smarter, more interesting and, overall, helping make the world of southern Oregon a better place.

Let's not mince words: For this important work, each relies on financial support from its neighbors; that's you!

In the next few pages is some basic information about 20 different groups. We encourage you to learn more, and then give!

And, join us 5 - 8 pm, Tuesday, December 3 at ScienceWorks in Ashland for our annual Giving Tuesday event. It is the only in-person meet, greet and give event in southern Oregon and part of a larger national trend. It is a chance to meet in-person the people and organizations doing this good work.

There may be more and more problems in world, but giving rates are up across the country—and, we believe that is an encouraging trend about how much TK, and that more and more solutions are just around the corner.

Be part of something bigger this holiday season!

Ashland Independent Film Festival

ashlandfilm.org

PO Box 218
Ashland, OR 97520



Mission Statement: Celebrate the diversity of human experience through the art of independent film by enriching, educating and inspiring all audiences.

How Donations Help:

\$25: Allows us to distribute four (4) tickets through our GiveFilm program, a program designed to distribute film tickets to people who would otherwise be unable to afford them.

\$50: Covers the cost of ten (10) festival catalogues, which are printed and distributed for free to the community.

\$100: Helps support our effort to engage local classrooms to participate in our LAUNCH student film competition.

\$500: Provides a full travel stipend to bring an independent filmmaker to Ashland to share their work and engage with audiences.

Ashland New Plays Festival

AshlandNewPlays.org

Peggy Moore, President
PO Box 3314, Ashland, OR 97520



Mission Statement:

Ashland New Plays is an incubator for new plays and assists playwrights in the development of new works through public readings and offers an educational forum to the community through discussions and workshops.

How Donations Help:

Much of our cost centers around pay for actors and directors. \$500 pays for a director for one play. \$200 pays for an actor. Smaller donations, coupled with other smaller donations, provide money to fund a reading. We do not have the costs of office space; most of our staff are volunteers.

We have need of a few volunteers to help at our Fall Festival (in October) and at the two "one offs" we in January and in the summer. Volunteers usher, take tickets, help set up and clean up.

Jackson County Children's Advocacy

www.cacjc.org

Danae Crawford
816 W 10th Street, Medford



Mission Statement: To meet the needs of children and families by providing a community-based, child-focused center that facilitates a compassionate, multi-disciplinary approach to the prevention, treatment, identification, investigation, and prosecution of child abuse.

How Donations Help:

A donation to The Children's Advocacy Center will help to provide forensic interviews, medical exams, therapy sessions, and advocacy services to abused children in Jackson County Oregon. It also helps us provide prevention education to the community.

Volunteering at The Center can take on many different forms. Some volunteers dedicate their time to weekly or monthly schedules helping to lighten the workload of our staff. We also have committees that help plan events, promote our educational and preventative trainings, and that work to maintain our facilities so our funds can go towards helping children not fixing a broken toilet. Our Board and Advisory Committee is also made up of dedicated volunteers who work together to guide The Center toward accomplishing our mission.

Jackson County Library Foundation

www.jclf.org

Sandy New, Executive Director
205 S. Central Avenue, Medford, OR 97501**Mission Statement:**

The Jackson County Library Foundation secures resources to strengthen innovation and literacy in our community.

How Donations Help:

Donations go toward investing in our libraries and the crucial services they provide to our community. Private support is the greatest endorsement of our belief that free and open access to information can change lives for the better and build a brighter future for our community.

The Foundation does not have volunteers. However, we help recruit volunteers for the Libraries. There are many volunteer opportunities through Library Services. People can go to the JCLS website to apply to be a volunteer.

Klamath Bird Observatory

KlamathBirds.org

PO Box 758
Ashland, OR 97520**Mission Statement:**

Advancing bird and habitat conservation through science, education, and partnerships. By protecting birds, we are helping to address today's most pressing environmental challenges.

How Donations Help:

You may have heard that since 1970 we have lost 3 billion birds, nearly a quarter of the birds in North America. Many include the tiny warblers that make miraculous migrations from their breeding grounds here in Oregon to the montane forests of western Mexico. KBO applies our science to help conserve the habitats that these birds need during their breeding, migration, and wintering seasons.

A \$150 dollar donation will pay for a small tracking device; a relatively new technology that is rapidly advancing our knowledge of where our migratory warblers are going. Information gained from a few individuals can help us identify what habitats they need, and where they may experience threats along their annual journey.

KBO leads many community science programs that are driven by volunteer bird watchers. We are gearing up for our Eastern Oregon Short-eared Owl surveys. These involve venturing to remote parts of the state where volunteers implement a standardized survey protocol. Training materials will be provided and no experience is necessary to volunteer. To learn more about this volunteer opportunity contact Nate Trimble nlt@klamathbird.org.

Legacy Earthkeepers Academy of Permaculture (L.E.A.P)

EarthKeepersAcademy.org

For more information,
831-428-4003**Mission Statement:**

Rooted in Love, Family, Self-Sustainability and Spiritual Values, our mission is to assist in the renewal of the planet and its sacred lands by the development and preparation of ECO-EDU Communities that can live on and off grid. We provide wholistic community support with events, workshops, courses, retreats and widespread application in Earthkeeping Philosophies and Ecological Regeneration.

How Donations Help:

Donation Packages are based on tier levels that include time share housing, special retreat discounts, a permaculture certificate, harvest goods, holistic services, tax services, acupuncture, curriculum access, permaculture courses, events, retreats and workshops.

Donations go towards obtaining a Co-Op lifetime membership for all grade levels to High School Graduation with a Diploma (\$5,000), Acquiring Permaculture Sites (\$200,000+), Land and Course Development (\$50,000-\$100,000+), Community Outreach (\$3,000+), Supplies (\$3,000), and Website (\$1,000).

One of the best feelings in the world is giving. The positive energy is contagious. With just one act of kindness, you can inspire others to go out and plant seeds of happiness through giving, too.

Mt. Ashland Association

MtAshland.com

Hiram Towle, General Manager
PO Box 220, Ashland, OR 97520**Mission Statement:**

The Mt. Ashland Association is dedicated to providing and promoting a healthy, quality experience in an alpine environment. Founded in 1992 when the local community rallied to "Save Mt. Ashland," the Association provides affordable and free opportunities for any young person growing up in our area to try skiing or snowboarding.

How Donations Help:

A \$50 donation to the Mt. Ashland Association enables the organization to give one child a scholarship to visit the ski area with their classmates through our school program. 15 percent of the kids in our school programs participate completely for free.

We love our volunteers! We have an amazing group of ski patrollers, most of whom are volunteers. Our Snow Hosts help guide guests as they arrive to ensure everyone gets set in the right direction from the moment they arrive. All volunteers are rewarded with free skiing and snowboarding as a reward for their hard work.

Oregon Shakespeare Festival

osfashland.org

15 South Pioneer Street
Ashland, OR 97520**Mission Statement:**

Inspired by Shakespeare's work and the cultural richness of the United States, we reveal our collective humanity through illuminating interpretations of new and classic plays, deepened by the kaleidoscope of rotating repertory.

How Donations Help:

Ticket sales cover a little over half of our budget. Donations have the following impact:

- OSF education program annually serve of total of 89,700 students and 9,300 adults and families.
- Audio description for 106 performances.
- Assistive listening devices upgraded and loaned out 5,168 times in 3 theatres.
- Caption services during 341 performances, for 1-11 patrons per performance.
- American Sign Language for 286 patrons, with interpretation for eight performances over 3 weekends.



Each season, over 700 volunteers donate more than 30,000 hours working in various departments at OSF. Opportunities include ticket takers and ushers in our theatres, concierges for Student Groups and Festival Noon, volunteers in the Tudor Guild Shop.

Ride My Road

RideMyRoad.org

Lauren Trantham
PO Box 298, Talent, OR 97540**Mission Statement:**

Ride My Road imagines a world free from the demand for commercial sexual exploitation. Ride My Road is national collective of bikers raising funds for anti-trafficking organizations.

Funds that are raised are granted out to established organizations combating trafficking and offering direct services to American survivors.

How Donations Help:

We have a goal to enroll 100 bikers into our program in 2020. A \$150 contribution ensures that a rider will receive printed educational and promotional material on human trafficking needed to start their fundraising campaign. This enrollment package equips our riders with the knowledge and education so that may reach out into their communities to spread awareness and to begin their fundraising campaign.

Ride My Road is always looking for event coordinators, graphic designers, videographers and support in marketing. Volunteers can work remotely and a very appreciated!

"The best way to find yourself, is to lose yourself in the service of others."
—Mahatma Gandhi

Rogue Rowing
RogueRowing.org

175 Emigrant Lake Rd., Ashland, OR 97520
412-735-0295



Mission Statement:

Rogue Rowing is a community based organization that inspires and supports a passion for the sport of rowing, promoting a welcoming, inclusive and supportive environment where every athlete can discover the powerful connection between self, boat, teammates and water.

How Donations Help:

- \$10:** Buys a Rogue Rowing racing shirt for a youth athlete.
- \$25:** Underwrites the race fee for a high school student.
- \$75:** Purchases safety lights for pre-dawn workouts.
- \$260:** Provides stabilizing pontoons for ability-impaired rowers.

All amounts appreciated! Your contribution to float our community's new dock on Emigrant Lake!

We have opportunities for volunteers to assist our adaptive rowers (those who are ability-impaired) with carrying their gear to and from the lake from the boathouse. Additionally, we have opportunities for volunteers to join us at shoreline clean up days, as well as helping out at race events on the lake.

Rogue Valley Farm to School
rvfarm2school.org

PO Box 898
Ashland, OR 97520



Mission Statement:

Rogue Valley Farm to School is working to create healthier, thriving communities by connecting school children with the local food system, providing school garden education, getting kids out to farms and getting farms selling to schools, for better meals, healthier kids and happier farmers!

How Donations Help:

- \$5/month:** brings two children out to a farm for a 4-hour Harvest Meal field trip.
- \$50/month:** month supports a whole class!
- \$100:** supports a Tasting Table for a school.
- \$1000:** supports a Tasting Table for a whole school year -- with a different locally grown fresh fruit or vegetable every month!

We always need volunteers! Help prep food for local lunches in schools, help us with our Harvest Meal program, join our school-based educators in caring for school gardens. And every year we need 80 volunteers to help us with the Siskiyou Challenge!! That's tons of fun!

Rogue Valley Mentoring
rvmentoring.org

295 E. Main, Suite G
Ashland, OR 97520



Mission Statement:

To transform entire communities through the mentoring of youth.

How Donations Help:

- \$25:** supplies healthy snacks for one session of a youth circle.
- \$625:** supports one youth in a mentor circle for six months.
- \$100:** provides activity passes for a one-to-one match for one month.
- \$1,000:** sponsors an individual youth in a one-to-one match for one year.

Our volunteers receive training to mentor young people, ages 10-20, in a one-to-one match or as co-facilitator of a mentor circle.

"It is every man's obligation to put back into the world at least the equivalent of what he takes out of it." —Albert Einstein

Rogue Valley Metaphysical Library & Media Exchange
www.rvml.org, email: library@rvml.org

Jordan Pease, Executive Director
1757 Ashland St. Ashland, OR 97520



Mission Statement:

With emphasis on practical solutions to the world's critical challenges, RVML's mission is providing easy access to information that inspires, heals and connects.

How Donations Help:

Founded in Ashland in 2002, RVML's unique collection of books, audiobooks, and DVDs has grown to be among the largest of its kind in the world. Specialties: Metaphysics, spirituality, personal development, science, paranormal, health/healing, culture and community.

In addition to the lending library, RVML also operates a media exchange where people can trade items on any subject at no cost. RVML also produces lecture and workshop events including the annual Architects of the New Paradigm Conference Series.

Sactuary One
sanctuaryone.org

13195 Upper Applegate Rd.
Jacksonville, OR 97530



Mission Statement:

To provide a refuge for animals and a healing place for people while promoting environmental stewardship.

How Donations Help:

- \$25:** Provide a life-changing service learning opportunity for one at-risk youth.
- \$250:** Sponsor one class of students for a hands-on field trip.
- \$50:** Provide veterinary Care for one dog or rabbit for one month.
- \$1000:** Covers the cost of running the farm for one day.
- \$100:** Provide medical care and quality feed for one sheep, llama, alpaca or goat.

From weeding and walking to mucking and mopping, the daily to-do list at Sanctuary One is vast. We couldn't get it all done without our team of dedicated volunteers, who embody the true spirit of community by saying "Yes I can." In turn, by providing the opportunity to volunteer on a real working farm, the Sanctuary helps people of all ages experience nature's power to heal. Working with animals and gardening has been widely shown to lower blood pressure, ease depression and stress, and help people establish therapeutic relationships.

ScienceWorks Hands-On Museum
ScienceWorksMuseum.org

1500 E Main Street
Ashland, OR 97520



Mission Statement:

To inspire wonder and stimulate creative exploration through fun interactive science and the arts.

How Donations Help:

- \$9:** sponsors 1 person's access to our financial accessibility programs, such as 1st Sunday and Museums for All.
- \$4,500:** buys new batteries for the forklift
- \$50,000:** produces a community science event, such as the Rogue Valley Mini Maker Faire.
- \$125:** refills the liquid nitrogen tank that we use in ScienceLIVE! shows and other educational programming.
- \$250,000:** underwrites the cost of researching, developing, and producing a new exhibit, such as Pterosaurs or Wild Music.
- \$325:** brings a hands-on inquiry program and educator to a rural school for a day.

ScienceWorks welcomes new volunteers of many backgrounds and talents! A sample of what our volunteers do for us: work in classrooms with field trip students, run programming stations during operating hours, help at special events and fundraisers (ex: Rogue Valley Mini Maker Faire, Brews & Boogie), work in the outreach event booth at Ashland parades, and set up materials for field trips.

"The meaning of life is to find your gift. The purpose of life is to give it away." —Pablo Picasso

Spay/Neuter Your Pet
 SpayNeuter.org

John Yunker
 SNYP, P.O. Box 477, Medford, OR 97501



Currently we need volunteers working from home to make appointment reminder calls. Future needs may include help in the clinic, marketing, and more.

Mission Statement:

Spay/Neuter Your Pet is committed to providing affordable spay/neuter services to the communities of southern Oregon and northern California to reduce the tragedy of pet overpopulation through prevention.

- Provides affordable spay/neuter services to the public with special attention to providing assistance to the underserved population.
- Supports the needs of feral/community cats and their caregivers.
- Reinforces southern Oregon and northern California shelters' efforts to spay/neuter pets before adoption.
- Educates the community on the importance of spay/neutering their pets.

How Donations Help:

- \$25:** covers a feral cat spay/neuter. **\$60:** covers a cat spay.
- \$80:** covers a small dog neuter. **\$155:** covers a large dog spay.

Spirit of Resh Foundation
 www.reshfoundation.org

Lily Myers Kaplan
 PO Box 1119, Jacksonville, OR 97530



We welcome volunteers to support Story Circles, Story of Remembrance events, and Community Ceremonies. Set up and break down help is especially helpful.

Mission Statement:

We envision a cultural re-alignment in which people embrace death as a way of enhancing life. Through stories and advocacy we inspire people to people to find meaning in mourning, live more fully by accepting death, and create purposeful legacies that make a difference in their homes and communities.

How Donations Help:

All funds contribute to ongoing program development, outreach, and informative presentations as well as general operating expenses such as marketing, printing, insurance, bookkeeping, and stipends.

- \$5:** covers supplies and postage for mailing one Loss to Legacy book. **\$50:** covers the cost of supplies for a Stories of Remembrance event.
- \$15:** covers one donated Loss to Legacy book to local cancer, hospice, or counseling center. **\$100:** covers 25% of travel expenses associated with presenting at statewide conferences.
- \$20:** covers one participant at a Community Ceremony or Story Circle. **\$250:** covers a 90-minute presentation on Befriending Death to a local cancer, hospice, or counseling center.

Southern Oregon Historical Society
 sohs.org

History Center, 106 N.
 Central, Medford, OR 97501



SOHS volunteers run the Society and accomplish much of the daily work, including assisting researchers in the Archives, gardening at Hanley Farm, managing events, and writing for the SOHS Quarterly.

Mission Statement:

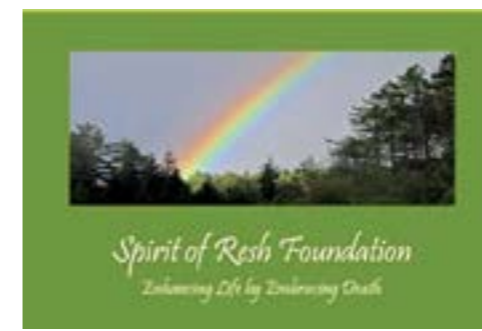
To make history come alive by collecting, preserving, and sharing the stories and artifacts of our common heritage.

How Donations Help:

- Under \$35:** Every donation is a welcome addition to SOHS's reserve funds, which make it possible for SOHS to employ core staff.
- \$35:** The cost of an individual membership to SOHS. Membership dues help SOHS publish its Quarterly magazine, and preserve and share artifacts.
- \$100:** SOHS Membership at the Patron level. Increased revenues increase SOHS's opportunities for sharing artifacts with the public, through events such as a recent quilt showing.

????????????????
 ??????????????.org

????????????????
 ?????????????????



????????????????
 ??????????
 ?????????

Mission Statement:

????????????????

How Donations Help:

????????????????

"We must give more in order to get more. It is the generous giving of ourselves that produces the generous harvest."
—Orison Swett Marden

I am for the child

I am for the child who lives in motels, cars and shelters. The child who stands in the entryway of a foster home at three o'clock in the morning, clutching a garbage bag filled with just a few belongings. That is the child I am for.

I am a Court Appointed Special Advocate (CASA) Volunteer.
I am you.

www.jacksoncountycasa.org • 541-734-2272

ADOPT
DONATE
VOLUNTEER

Finding homes for homeless pets
 Saving lives since 1928

Open every day 11 am to 5 pm

SoHumane

2910 Table Rock Road
 Medford, Oregon 97501
 541-779-3215
 sohumane.org

"No one has ever become poor by giving." —Anne Frank

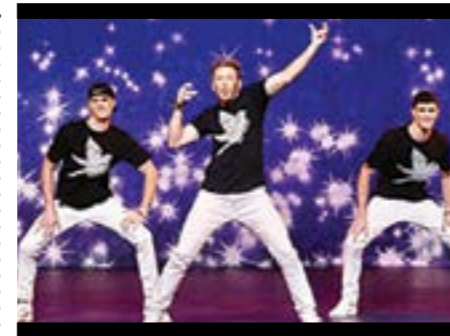
[P] OUR PICKS



thu 7
Liver Down the River
MUSIC—What most likely refers to a drinking problem could also just be a clever play on words, or both. Bluegrass and funk are notorious for these intricacies in their band name, lyrics, and musical notes, and Colorado-born Liver Down the River is no exception as they barrel through their thoughtful tunes at the speed of a train. 6 pm. Talent Club, 114 Talent Avenue, Talent.



fri 8 & sat 9
Southern Oregon Ski & Snowboard Swap
SWAP—Ebay is good when it comes to cookie jars and car parts, but connecting at the swap brings the experience with the gear, along with yard sale stories from the mountain. 4 - 10 pm, Friday. 8 am - 2 pm and 4 - 7 pm (closeout), Saturday. Jackson County Expo, 1 Peninger Road, Central Point. \$5, Friday. Free. Saturday.



sat 9
Dancing with the Rogue Valley Stars
DANCING—Everyone has got to get their start somewhere, and for many of us, the Rogue Valley is that starting point. Fashioned after the TV Show, Dancing with the Rogue Valley Stars features a ballroom dancing competition and a hip hop competition. 2 pm, no awards. \$5 - \$15. 7 pm, full competition. \$20 - \$25. North Medford High School Auditorium, 1900 N. Keene Way Drive, Medford.



sat 9
Jaca
MUSIC—Returning to one's hometown with a bit of experience under one's belt can be exciting and daunting. Fulbright Scholar and Ashland native Jaxon Williams has been making a name for himself in the classical guitar world, and he is returning home to perform with his guitar/clarinet duo Jaca alongside Wesley Ferreira presenting a truly unique show. 7:30 pm. Rogue Valley Unitarian Universalist Fellowship, 87 Fourth Street, Ashland. \$12 - \$20.



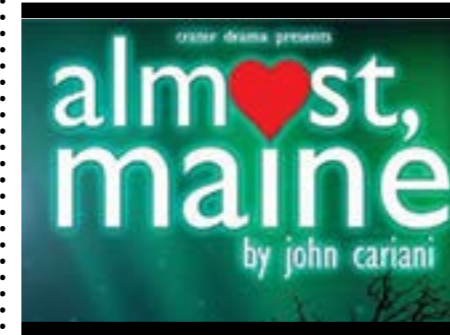
sat 9
The Odd Word
THEATRE—Known best for his play Waiting for Godot, and winner of the Nobel Prize for Literature in 1969, a handful of Samuel Beckett's shorter works will be featured by Exit 14 Theatre in a final showing: Breath, Rockaby, Eh Joe, Come and Go, and Play. 8 pm. Exit 14 Theater, 280 E. Hersey Street, #10, Ashland. \$10 - \$15.



tue 12
Young Thug and Machine Gun Kelly
MUSIC—American rap legend Young Thug (Jeffery Lamar Williams) brings his tour with Machine Gun Kelly (MGK aka Colson Baker) to the Valley, along with Polo G and Strick to complete the urban/hip-hop/rap lineup. Let the beats begin. 8 pm. Jackson County Expo, 1 Peninger Road, Central Point. \$40 - \$199.



thu 14
Will for the Woods
FILM—Death is an unavoidable part of life, and this award-winning documentary film looks at the beneficial impact the human body can have on the environment after passing away. The film will be followed by discussion, and a special guest from Willow Witt Natural Cemetery. 7 pm. Ashland Public Library, 410 Siskiyou Boulevard, Ashland. Free - \$10.



fri 15 - sun 24
Almost, Maine
THEATRE—Love is in the air as snow drifts around the town of Almost, Maine, located on the border of Maine and Canada. Nine different couples are charmed during the northern lights (aurora borealis) simultaneously, and the play takes the audience along the paths that each of them take. 2 and 7 pm. Crater Performing Arts Center, 655 N. Third Street, Central Point. \$5 - \$7.



fri 22 - sun 24
Southern Oregon Spartans vs. Seattle Totems
HOCKEY—Looking for some payback on their home ice, the Southern Oregon Spartans will face the Seattle Totems in Medford, after disappointing losses to them up north earlier this month. Under the new ownership of Dylan and Brie Martin as of this summer, the Spartans hope to give their season a boost with home wins. 1:30 and 7:30 pm. The RRRink, 1349 Center Drive, Medford.



thu 28
Earths giving
THANKSGIVING—Nonprofit LEAP (Legacy Earthkeepers Academy of Permaculture) is hosting a co-creative community potluck feast as a new annual tradition. Join with nonprofits, initiators, creators, musicians, and entrepreneurs who are giving back to the Earth. Please come with anything you'd like to share to contribute to our collective sanctuary of solutions. 2 - 9 pm. Jackson Wellsprings Casbah, 2253 Hwy 99 N, Ashland. Suggested donation \$10 - \$20.



tue 3
Giving Tuesday
GIVING—Step aside, Black Friday, Small Business Saturday, and Cyber Monday - 'Tis the Season for Giving! Join over 15 local nonprofits, including the Rogue Valley Messenger, for an evening of community connection and generosity. Beer and wine tasting, along with a raffle, will round out the evening and the only local celebration of this national event. 5-8 pm. ScienceWorks, 1500 E. Main Street, Ashland. Free.



sat 7
Popovich Comedy Pet Theater
COMEDY—Straight out of Las Vegas, the Popovich Comedy Pet Theater is exactly what it sounds like. Featuring over 30 performing pets, all rescued from animal shelters, and led by Moscow Circus veteran Gregory Popovich, the show is a family favorite the world over. 3 pm. Rogue Theater, 143 SE H Street, Grants Pass. \$20 - \$25.

LIVE MUSIC *and Nightlife*



PEIA BRINGS INTERESTING SONGS TO ROGUE VALLEY UNITARIAN UNIVERSALIST FELLOWSHIP ON 11/7.

JACKSONVILLE
Shine Swing Trio - South Stage Cellars. 6-8 pm. Tribute to Louie Armstrong and Nat King Cole.

MEDFORD
Bob Haworth - The Urban Cork. 5 pm.
True Reactions - RoxyAnn Winery. 6:30 pm.

Saturday, November 9
ASHLAND
Terry Robb - The Geos Institute. 7 pm. \$20-25. Acoustic guitar.
Lis Addison - The DanceSpace. 5:30 pm. \$60-75.
Jaca Chamber Music - Rogue Valley Unitarian Universalist Fellowship. 7:30p m. \$12-20.
The Portland Cello Project - Brickroom. 9 pm. \$10
Robbie Dacosta - The Black Sheep Pub. 8 pm.
Terry Robb - The Geos Institute. 7:30 pm.
High Grade Harvest Ball - Ashland Armory. 7 pm. \$22-45.



MARK THALES FROM THE EVENING SHADES IS PERFORMING AT THE ROGUE GRAPE ON 11/9.

Thursday, November 7
ASHLAND
John Hollis - Callahan's Lodge. 10 pm.
Board Game Night - Funagain Games. 6 pm.
Trivia with Peter Bolton - bird & rye. 8 pm.
Rmean, Anonymous & Hollywood - Ashland Armory. 6:30 pm. \$35-40.
Karaoke - Oberon's. 9 pm.
Peia - Rogue Valley Unitarian Universalist Fellowship. 7 pm. \$20-30. Folk.

Friday, November 8
ASHLAND
Lis Addison - The DanceSpace. 5:30 pm. \$20-25.
The Shivas and The Shaky Harlots - Brickroom. 9 - 11:30 pm. \$10. Rock
Jacob Jolliff - Rogue Valley Unitarian Universalist Fellowship. 7 pm. Bluegrass.
Dan Engle and Friends - Oberon's. 6 pm. Irish Dance Music.

David Scoggin - Wild Goose Cafe and Bar. 6 pm. Jazz.
John Hollis - Callahan's Lodge. 6 pm.
Tango - Eleven. 8 pm.

GRANTS PASS
Open Mic - The Copper Mug Cocktail Lounge. 9 pm.
Ben Larsen Band - The Haul. 9 pm.

EAGLE POINT
J Brothers Trio - Pheasant Brook Vineyards. 1 - 3 pm. Rock.

JACKSONVILLE
Mercy - Boomtown Saloon. 8:30 pm.

GRANTS PASS
Irish Trad - Weekend Beer Company. 6 pm.
Karaoke - Cascades of Grants Pass. 1 pm.
80's Dance Mix - The Copper Mug Cocktail Lounge. 8 pm.
Dance Night - Flespy's. 9 pm.

MEDFORD
Jen Ambrose - Larks. 4:30 pm. Jazz, Funk.
Latin Dance - Grape Street. 8 pm. \$7.
Open Mic - The Rogue Grape. 7 pm.
Live Band Karaoke - Pier 21 Tavern. 9 pm.

TALENT
Liver Down the River - Talent Club. 6 pm. Funk, Bluegrass.



LIS ADDSON PERFORMS SWEET MUSIC AT DANCESPACE ON 11/8 & 11/9.

Advertising Space Available!

This is a great spot to advertise if you host any sort of weekly events. Great prices and maximum exposure. Contact us today!



advertise@roguevalleymessenger.com



LIVE MUSIC *and Nightlife*



JACA BRINGS AN ORCHESTRA TO ROGUE VALLEY UNITARIAN UNIVERSALIST FELLOWSHIP ON 11/9.

MEDFORD

True Reactions - Grape Street. 8 pm.
Godemis and Twistello - King Wah's. 9 pm.
Mark Thales - The Rogue Grape. 7 pm. Rock.

WILLIAMS

Matthew Human and the Human Revolution - Dorothy Gale's Event Centre. 8 pm. \$15-20.

Sunday, November 10

APPLEGATE

The Funky Knuckles - Applegate River Lodge. 8:30-11:30 pm. \$15. Jazz.

ASHLAND

Celtic Music Session - Black Sheep Pub & Restaurant. 2-5 pm.
Space Challenger, Chromatic Colors, and Astrofauna - Black Sheep Pub & Restaurant. 7-10 pm. \$5. Jazz-fusion, Punk, Rock.
Danielle Kelly Trio - Luna Cafe + Mercantile. 5 - 7 pm. Jazz.
Lee Stewart - Callahan's Lodge. 11 pm.

MEDFORD

Josh Capehart - Walkabout Brewing Co. 4 pm.
Sunday Board Games - Steamworks Meadery. 4 pm.

Monday, November 11

ASHLAND

Open Mic - Oberon's. 9 pm.
Michael Kemp - Callahan's Lodge. 11 pm.

MEDFORD

Cool Cat Funk - The Copper Plank. 6 pm.
Annual Veteran's Day Concert - Central Medford High School. 7 pm.

Tuesday, November 12

ASHLAND

Pub Karaoke - bird & rye. 9 pm.
Paint & Sip Pottery with Dayton Mason - Eleven. 6:30 pm.
Open Mic hosted by Robbie DaCosta - Black Sheep Pub & Restaurant. 8:30 pm.
Tuesday Night Trivia - Louie's. 7 pm.

CENTRAL POINT

Young Thug and Machine Gun Kelly - The Expo. 8 pm. \$40.

GRANTS PASS

Tuesday Night Trivia - Double Taps. 6 pm.

Wednesday, November 13

ASHLAND

Blades of Grass - Black Sheep Pub & Restaurant. 8 pm. Bluegrass.
Q&A Duo - Wild Goose Cafe & Bar. 7 pm.
John Hollis - Callahan's Lodge. 10 pm.
The People's Open Mic - Jackson Wellsprings. 8 pm.

MEDFORD

Rick Millward - RoxyAnn Winery. 5 pm.
Paint & Sip Pottery - Grape Street Bar & Grill. 6-8 pm. \$40.

PHOENIX

Josh Dub hosts Open Mic Night - Phoenix Clubhouse. 7-10 pm.

Thursday, November 14

ASHLAND

Arturo Ville Corona - Grants Pass Museum of Art. 7-9 pm. \$15. Latin.
Craig Martin & Friends - Wild Goose Cafe & Bar. 7 pm.
John Hollis - Callahan's Lodge. 10 pm.
Game Knight - Black Sheep Pub & Restaurant. 8 pm.
Trivia with Peter Bolton - bird & rye. 8 pm.

Sky, An Evening of Flamenco Dancing - Bellview Grange. 8 pm. \$8-35.

GRANTS PASS

Live Irish Trad Music - Weekend Beer Company. 6-8:30 pm.
80s Dance Mix - The Copper Mug. 8 pm

MEDFORD

Open Mic - The Rogue Grape. 6:30 - 9 pm.
Live Band Karaoke - Pier 21. 9 pm.

Friday, November 15

ASHLAND

The Last Revel - Brickroom. 9-11 pm. \$10. Americana.
Michael Winograd & Christina Crowder - Havurah Synagogue. 7:30 pm. Punk.
Dan Engle and Friends - Oberon's. 6 pm.
John Hollis - Callahan's Lodge. 6 pm.
David Scoggin - Wild Goose Cafe & Bar. 6 pm.
Jennifer Montone with the Rogue Valley Symphony - SOU Recital Hall. 7:30pm. \$15-55.

GRANTS PASS

Open Mic Comedy Night - The Copper Mug. 9 pm.

Saturday, November 16

ASHLAND

Jennifer Berezan - Rogue Valley Unitarian Universalist Fellowship. \$25.
Over the Rhine - Brickroom. 9-11 pm. \$20.
Butterfly Medicine Project - Dragon Gongfu Tea House. 8 pm. \$5-10. Acoustic.
Southern Oregon Ukulele Players - Black Sheep Pub & Restaurant. 3 pm.
Lee Stewart - Callahan's Lodge. 6 pm.

GRANTS PASS

Fred Pool - Barnstormers Theatre. 7:30 pm. Singer-Songwriter.
Saucy - G Street Bar & Grill. 8 pm.
World's Least Dangerous Band - JD's Sports

Bar and Brewery. 9 pm.

MEDFORD

Rogue Valley Symphony - Craterian Theatre. 7:30 pm.

TALENT

Jen Ambrose and Jon Galfano - StoneRiver Vineyard. 4 pm. Pop, Rock.

Sunday, November 17

ASHLAND

Celtic Music Session - Black Sheep Pub & Restaurant. 2 pm.
Ed Dunsavage Trio - Luna Cafe + Mercantile. 5-7 pm. Jazz.
Lee Stewart - Callahan's Lodge. 11 pm.

GRANTS PASS

Rogue Valley Symphony - Grants Pass Performing Arts Center. 7:30 pm. \$15-55.
Ben Rice - Touvelle Lodge. 2 pm. Blues.

Medford

Watson House - Walkabout Brewing Co. 4 pm. Pop, Indie Rock.
Sunday Board Games - Steamworks Meadery. 4 pm.

Monday, November 18

ASHLAND

Open Mic - Oberon's. 9 pm.
Robbie DaCosta - bird & rye. 7 pm.
Michael Kemp - Callahan's Lodge. 6 pm.
Antics Improv - Black Sheep Pub & Restaurant. 8 pm.

Tuesday, November 19

ASHLAND

Daniel Rodriguez - Brickroom. 9-11 pm. \$10. Singer-songwriter.
Rogue Poetry Slam with Slam Master Alex - Black Sheep Pub & Restaurant. 7:30 pm.
Pub Karaoke - bird & rye. 9 pm.

LIVE MUSIC *and Nightlife*



JENNIFER BEREZAN BRINGS MUSIC TO ROGUE VALLEY UNITARIAN UNIVERSALIST FELLOWSHIP ON 11/16.

Michael Kemp - Callahan's Lodge. 6 pm.
Tuesday Night Trivia - Louie's. 7 pm.

GRANTS PASS

Neck of the Woods, Attic, and YHWH - The Sound Lounge. 8-11 pm. Metal, Hard Rock.

MEDFORD

Southern Oregon Jazz Orchestra - Grape Street Bar & Grill. 6-8 pm. Jazz.
Paint & Sip Pottery - The Rogue Grape. 6-8 pm. \$40.

Wednesday, November 20

APPLEGATE

Polyrhythms - Applegate River Lodge. 8 pm. Progressive Jazz.

ASHLAND

Blades of Grass - Black Sheep Pub & Restaurant. 8 pm. Bluegrass.
Wild Goose Chase Trio - Wild Goose Cafe & Bar. 7 pm.
John Hollis - Callahan's Lodge. 10 pm.
The People's Open Mic - Jackson Wellsprings. 8 pm.
Matthew Marcus McDaniel and Jae Jae - Oberon's. 8:30 pm.
Aaron Reed - Belle Fiore Winery. 5 pm. Singer-Songwriter.
Trivia Night with Erica Thompson - bird & rye. 8 pm.

MEDFORD

Open Mic - Bad Ass Coffee. 6 pm.
Musician Jam - Grape Street Bar & Grill. 6 pm.

Thursday, November 21

ASHLAND

John Hollis - Callahan's Lodge. 10 pm.
Trivia with Peter Bolton - bird & rye. 8 pm.
Board Game Night - Funagain Games. 6 pm.
Karaoke - Oberon's. 9 pm.

GRANTS PASS

Live Irish Trad Music - Weekend Beer Company. 6-8:30 pm.
80s Dance Mix - The Copper Mug. 8 pm.
Dance Night - Flespy's. 9 pm.

MEDFORD

Open Mic - The Rogue Grape. 6:30 - 9 pm.
Live Band Karaoke - Pier 21. 9 pm.
Jen Ambrose - Larks. 4:30 pm. Jazz, Funk.
Latin Dance - Grape Street. 8 pm. \$7.

Friday, November 22

ASHLAND

Rogue Suspects - Brickroom. 9 pm. \$10.
Waking Hazel - The Black Sheep. 9 pm. \$5.

MEDFORD

Zak Knutson - The Urban Cork. 5 pm. County, Pop.
Soul Vibrator - Johnny B's. 9 pm. \$5. Funk, Soul.
Ruby Rain - Howiee's. 9 pm.

Saturday, November 23

ASHLAND

Lee Stewart - Callahan's Lodge. 6 pm.

GRANTS PASS

VM - Flespy's Bar & Grill. 9 pm.

JACKSONVILLE

Saucy - Boomtown Saloon. 8:30 pm.

KERBY

Distilled-Spirit Rebellion - G-Spot. 8 pm. \$5.

Sunday, November 24

APPLEGATE

Open Mic - Applegate Lodge. 7 pm.

ASHLAND

Celtic Music Session - The Black Sheep Pub. 2 pm.
Jazz Sunday - Luna Cafe. 5 pm.

Lee Stewart - Callahan's Lodge. 11 pm.

GOLD HILL

Sunday Jam - Lucky's. 3 pm.

MEDFORD

Greg St Clair - Walkabout Brewing Co. 4 pm. Country, Pop.
Timberline Express Big Band - First Presbyterian Church. 7 pm. \$25. Jazz.
Board Games - Steamworks Meadery. 4 pm.

TALENT

Sooan, D'AR, and G_Rad - TonTon's Artisan Affections. 9 pm.

Monday, November 25

ASHLAND

Open Mic - Oberon's. 9 pm.
Robbie DaCosta - bird & rye. 7 pm.
Michael Kemp - Callahan's Lodge. 6 pm.

Tuesday, November 26

ASHLAND

Pub Karaoke - bird & rye. 9 pm.
Michael Kemp - Callahan's Lodge. 6 pm.
Open Mic - The Black Sheep PUB. 8:30 pm.
Jazz Jam Swing Dance - SHAKE 'N BAKE JAZZ. 7 pm.
Board Game Night - Funagain Games. 5 pm.

GRANTS PASS

Trivia Night - Double Taps. 6 pm.

MEDFORD

Paint & Sip Pottery - The Rogue Grape. 6-8 pm. \$40.

Wednesday, November 27

ASHLAND

Blades of Grass - Black Sheep Pub & Restaurant. 8 pm.
The People's Open Mic - Jackson Wellsprings. 8 pm.
John Hollis - Callahan's Lodge. 10 pm.

GRANTS PASS

Phillip Reed - Wild River Pub. 6-8 pm. Acoustic, Americana.

Thursday, November 28

ASHLAND

Karaoke - Oberon's. 9 pm.

GRANTS PASS

Live Irish Trad Music - Weekend Beer Company. 6-8:30 pm.

MEDFORD

Open Mic Night - The Rogue Grape. 7 pm.
Live Band Karaoke - Pier 21. 9 pm.

Friday, November 29

ASHLAND

Dan Engle and Friends - Oberon's. 6 pm.
David Scoggin - Wild Goose Cafe & Bar. 6 pm.
John Hollis - Callahan's Lodge. 6 pm.

MEDFORD

Gypsy Gillis - Grape Street Bar & Grill. 8 pm. Rock.

WHITE CITY

Nicole+Rick - Kriselle Cellars. 1-4 pm.

Saturday, November 30

ASHLAND

Free Creatures and Fox and Bones - Brickroom. 9 pm. \$10. Hip Hop, Jazz.
Lee Stewart - Callahan's Lodge. 6 pm.

GRANTS PASS

The Miller Twins - The Copper Plank. 5-7 pm.

MEDFORD

World's Least Dangerous Band - Grape Street Bar & Grill. 8 pm. Rock.

TALENT

Incognito - StoneRiver Vineyard. 4 pm. Pop, Rock.

WHITE CITY

Jen Ambrose and Jon Galfano - Kriselle Cellars. 1-4 pm.

Sunday, December 1

ASHLAND

Ed Dunsavage Trio - Luna + Mercantile. 5-7 pm. Jazz.
Lee Stewart - Callahan's Lodge. 11 pm.

CENTRAL POINT

Nicole+Rick - Rellik Winery. 1-6 pm.

MEDFORD

Peter Herzog - Walkabout Brewing Co. 4 pm. Blues, Americana.
Pink Martini - Craterian Theater. 7-9 pm. Jazz.
Sunday Boardgames - Steamworks Meadery. 4 pm.

Monday, December 2

ASHLAND

Open Mic - Oberon's. 9 pm.
ATM Trio - Wild Goose Cafe & Bar. 8 pm.
Michael Kemp - Oberon's. 6 pm.

Tuesday, December 3

ASHLAND

Pub Karaoke - bird & rye. 9 pm.
Open Mic hosted by Robbie DaCosta - Black Sheep Pub & Restaurant. 8:30 pm.
Tuesday Trivia - Louie's. 7 pm.
Michael Kemp - Callahan's. 6 pm.

GRANTS PASS

Tuesday Trivia - Double Taps. 6 pm.

MEDFORD

Paint & Sip Pottery - Common Block Brewing Company. 6 pm.

Wednesday, December 4

MEDFORD

Musician Jam - Grape Street Bar and Grill. 6 pm.
Open Mic - Bad Ass Coffee. 6 pm.

Thursday, December 5

MEDFORD

Open Mic - The Rogue Grape. 7 pm.
Sip & Paint Winter Sleigh Ride - Art 4 Joy. 6 pm.
Paint & Sip Pottery - RoxyAnn Winery. 5 pm.

Friday, December 6

MEDFORD

Whose Live Anyway? - Craterian Theater. 7:30 pm. Comedy, Improv.

Saturday, December 7

MEDFORD

DKSP - Grape Street. 8 pm

Sunday, December 8

ASHLAND

Board Games - Steamworks Meadery. 4 pm.

MEDFORD

Taurie Michele - Walkabout Brewing. 4 pm.

Wednesday, December 11

MEDFORD

Paint & Sip Pottery - Grape Street Bar & Grill. 6 pm. 🍷



SAVANNAH FUENTES BRINGS FLAMENCO DANCE TO THE BELLVIEW GRANGE ON 11/14.

EVENTS



WREATHS MADE FROM LAST YEAR'S EVENT.

Art

KAT MCIVER, BRIDGET REYNOLDS, AND DARCIE STERNENBERG

Through November. Don't miss one of a kind mixed media, sculptures, and photographs by some of the Rogue Valley's finest artists. Ashland Art Center, 357 E Main St, Ashland.

COREY KAHN AND KATHERINE BIRD AT GRANTS PASS MUSEUM OF ART

Through Nov. 15. Blueprints is a painting series by Corey Kahn exploring life and death complexities. The Featured Artist for October is Katherine Bird who works in mixed media. Grants Pass Museum of Art.

JEANNE LARAE-LAGANO AT ART DU JOUR

Through November. Larae-Lagano is Art du Jour's guest artist throughout November, showcasing her one-of-a-kind nature paintings. Art du Jour, 213 E Main St, Medford.

THE CUTTING EDGE AT ROGUE GALLERY & ART CENTER

Through Nov. 8. This exhibit features a collaboration of father and daughter artists, Baba Wagué Diakité and Penda Diakité.

FAVELA TUESDAY TEAM

Through Dec. 10. Community members are invited to work along Visiting Artist and Scholar in Teaching resident Justin Favela every Tuesday evening as he builds his signature piñata style installation in the Museum's Main Gallery. Learn more at sma.sou.edu.

NORIKO SUGITA AT HANSON HOWARD GALLERY

Nov. 1 through Dec. 3. Sugita layers thin pigments of saturated color along with active marks through a reductive woodcut printing technique, and Japanese traditions. Learn more at hansonhowardgallery.com. Hanson Howard Gallery, 89 Oak St, Ashland.

TOM HAUSKEN AT HANSON HOWARD GALLERY

Nov. 1 through Dec. 3. Hausken's paintings are rich with texture and layering, fundamentally grounded in landscape forms and colors. He avoids including details that would infer a specific place. Learn more at hansonhowardgallery.com. Hanson Howard Gallery, 89 Oak St, Ashland.

STEFAN WOLF DEEP IMPRESSIONS

Through Nov. 22. Stefan Wolf demonstrates his passion for relief printing with his striking hand carved linoleum and woodblock prints. Learn more at www.roguegallery.org. Rogue Gallery Art Center, 40 S Bartlett St, Medford.

COLOR NOTES OIL PAINTING BY JENAY ELDER

Oct. 29 through Dec. 1. Jenay Elder impressionistic oil paintings are known for their textured notes of color, representational quality and their sensitive subject matter. Learn more www.artandsoulgallery.com. Art and Soul Gallery, 247 E. Main St. Ashland.

FALL TERM EXHIBITIONS, ROUND 2

Through Dec. 5. View student artwork ranging from photography to painting to mixed media. Central for the Visual Arts at SOU, 1250 Siskiyou Blvd, Ashland.

SIP AND PAINT POTTERY WITH BEN WOOD

Friday, November 8 from 6 - 8 pm. Design your own pottery cup using sgraffito, an ancient Italian technique for decorating pottery. Learn more at www.theroguegrape.com. The Rogue Grape, 36 S Central Ave, Medford.

OREGON COAST TRAIL SERIES

Month of November. Kristen O'Neill presents her Oregon Coast Trail series all month. Ma Mosa's Restaurant, 118 E St, Grants Pass.

Classes

TUTORIAL TUESDAYS

Join fellow genealogy researchers Tuesday evenings at the Jackson County Genealogy Library. For more information call 541-512-2340 or email reception JCGI@gmail.com. Jackson County Genealogy Library, 3405 S Pacific Hwy, Medford.

ROGUE VALLEY MENTORING ESSENTIALS

Dec. 7 and 14 at 9 am. Change a life with an hour a week. Become a Mentor! Training covers 1-1 youth mentoring, circle mentoring, relationship building, active listening, healthy boundaries, and more! Register at rmentoring.org. 815 S Oakdale, Medford.

STAGE MANAGEMENT WITH JEFF BAKER

Nov. 17. This one-evening course will provide an overview of basic responsibilities of an effective Stage Manager. Learn more at www.barnstormersgp.org. Barnstormers Theatre, 112 NE Evelyn Ave, Grants Pass.

EXPLORING THE WORLD OF FUNGI

Nov. 15 - 17. Come search for and learn to identify edible, poisonous, and other mushrooms above the ground and truffles below. \$165. Learn more at www.thesfi.org. Siskiyou Field Institute, 1241 Illinois River Rd, Selma.

A COURSE IN MIRACLES CLASS GATHERINGS

Nov. 15, 22 and 29 from 7 - 9 pm. Learn to apply spiritual tools to transcend fear and experience the power of the present moment. Talent Library Community Room, 101 Home St, Talent. \$10-20 donation.

Community

BALLROOM DANCING

Every Tuesday from 1:30 - 4 pm with lessons starting at 12:30 pm. \$3. Live music by Dave Flick. Square Dance Hall, 3377, Table Rock Rd, Medford.

DECK THE PAWS HOLIDAY FAIR

Dec. 7 from 12 - 4 pm. A fun family event to

support Friends of the Animal Shelter and help our community's homeless animals. Phoenix Plaza Civic Center, 220 N Main St, Phoenix.

WINTERFAIRE

Saturday, November 23 from 10 am - 4 pm. WinterFaire is the biggest community event of the school year. It draws not only alumni and old friends, but hundreds of people from all over the valley. The Siskiyou School, 631 Clay St, Ashland.

SOUTHERN OREGON HOLIDAY MARKET

Nov. 8 - 10. The Olsrud, Mace and Padgham Buildings will host all the best commercial and direct sales products for holiday shopping. Learn more at www.attheexpo.com. The Expo, 1 Penning Rd, Central Point.

THE FOREST NATURAL BURIAL GROUND INFO SESSION

Nov. 24 from 2 - 4 pm. Join us for an afternoon to learn about this exciting local option for a final resting place, opening to the public in early 2020. Learn more at www.willowwittranch.com. Ashland Public Library, 410 Siskiyou Blvd #2196, Ashland.

36TH ANNUAL INTERFAITH THANKSGIVING CELEBRATION

Thursday, November 28 at 10 am. This year we have asked our presenters to speak about what their tradition offers in the face of hostile opposition. Wesley Hall, behind First United Methodist Church, 175 N Main St, Ashland.

FINE ARTS AND CRAFTS FAIR

Nov. 29 and 30 from 5 - 10 pm. Painting, ceramics, sculpture, prints, stained glass jewelry, wood, photography, textiles, home décor and specialty foods from Ashland Zen Center's gardens. Oregon Shakespeare Festival Welcome Center, Corner E. Main and S Pioneer, Ashland.

ROCK YOUR SCHOOL PARTY

Nov. 13 at 6 pm. Rep your school colors and bring your team pride. Enjoy free food, live music, cotton candy, and a DJ. Learn more at www.joymedford.com. Joy Church, 2715 Table Rock Rd, Medford.

EARTHSIVING

Nov. 28 from 2 - 9 pm. Co-creative community potluck feast and platform for Earth-based living. Music, presenters, and activities. Learn more at www.siskiyouclinic.com. Jackson Wellsprings Casbah, 2253 OR-99, Ashland. Suggested donation: \$10-20.

PARTY FOR A CURE

Nov. 16 at 6 pm. Please join us for a rockin' good time at the 7th Annual Party for a Cure hosted by the Relay For Life of Southern Oregon. \$5. JD's Brewery, 690 Redwood Hwy, Grants Pass.

WREATH MAKING

Nov. 30 from 11 am - 3 pm. The Southern Oregon Historical Society hosts Wreath Making. Learn more at www.sohs.org. Hanley Farm, 1053 Hanley Rd, Central Point.

LEARN ABOUT HUMAN SERVICES AT RCC

Nov. 12 and 26, from 5 - 7 pm. Rogue Community

College is hosting two meetings in November to provide information about the human services program and the many career opportunities in this field. Learn more at www.roguecc.edu/human-services. RCC/SOU Higher Education Center, 101 S. Bartlett St. in Medford.

Kids & Family

FAMILY FUN ARCHERY

Saturdays from 11 am - 12:30 pm. Learn archery while having fun popping balloons & loosing arrows at creative targets! Rental equipment available. Children required to have an adult supervise and participate with them. More info at www.moonbowarchery.com. Ashland Parks & Rec Center, 1195 E Main St, Ashland.

PRESCHOOL PUPPET THEATRE

Nov. 8 and Dec. 13 from 10:30 - 11:45 am. Join Brenda Bear and friends as they discover the wonders of our natural world. Pre-register online or call the Nature Center at 541-488-6606. \$6. North Mountain Park, 620 N Mountain Ave, Ashland.

Sports & Outdoor

ARCHERY OPEN SESSION

Wednesdays from 6:30 - 8 pm. Hone your archery skills and learn techniques from other archers, both traditional and modern, while having fun popping balloons and loosing arrows at creative targets! Rental equipment available. Ashland Parks & Rec Center, 1195 E. Main St, Ashland.

TAI CHI WITH PETE

Wednesdays, 10:30 - 11:45 am. Everyone welcome! If you need more info, call director Rick Patsche, 541-702-2585. \$5. Jacksonville Community Center, 160 E Main St, Jacksonville.

Stage

SWEENEY TODD

Aug. 29 through Nov. 10. "Sweeney Todd" stars Cabaret favorites Galloway Stevens as Sweeney and Valerie Rachelle as Mrs. Lovett. The London-inspired dinner menu for Sweeney Todd includes freshly baked meat pies. \$12-43. Learn more at oregoncabaret.com. Cabaret Theatre, 241 Hargadine St, Ashland.

QUILTERS

Oct. 18 through Nov. 10. Quilters is the story of a pioneer woman and her six daughters. A rich mosaic of scenes captures the sweep and the beauty, the terror and the joy, the harsh challenges and the abiding rewards of frontier life. \$15-23. Learn more at barnstormersgp.org. Barnstormers Theatre, 112 NE Evelyn Ave, Grants Pass.

THE ODD WORD: FIVE SHORT PLAYS

Nov. 9 at 8 pm. Exit 14 Theater tackles five of Samuel Beckett's shorter works including Breath, Rockaby, Eh Joe, Come and Go and Play. \$10-15. Learn more at www.exit14theater.com. Exit 14 Theater, 280 E. Hersey #10, Ashland.

EVENTS



MIRACLE ON 34TH STREET IS BEING PERFORMED ON 11/21-12/31 AT OREGON CABARET THEATRE.

MIRACLE ON 34TH STREET

Nov. 21 through Dec. 31st. Oregon Cabaret presents Miracle on 34th Street: A Live Musical Radio Play adapted from Jon Lorenz' 1947 Lux Radio Broadcast of the classic Christmas story. Learn more at www.oregoncabaret.com. Oregon Cabaret Theatre, 241 Hargadine St, Ashland. \$29 - 43.

Presentations

THE BOUNTY OF THE LAND: SOUTHERN OREGON AGRICULTURE

Nov. 13 from 12 - 1 pm. The illustrated talk explores the geographic and economic conditions that enabled Southern Oregon farming to thrive as early as the 1850s. Learn more www.jcls.org. Ashland Library, 410 Siskiyou Boulevard, Ashland.

35TH ANNUAL INTERFAITH CELEBRATION

Nov. 22 from 10 - 11 am. Leaders from many spiritual traditions will contribute: Christian, Sufi, Pagan, Hindu, Tao, Buddhist, Jewish, New Thought and our own Rev. Linda Repond. First United Methodist, 175 N Main St, Ashland.

AN EVENING WITH EVA SCHLOSS

Nov. 11 at 6:30 pm. Eva went into hiding in Holland, was betrayed, captured and sent to Auschwitz-Birkenau death camp. Listen to a first hand account of the life of her sister Anne Frank and the discovery and printing of her famed diary. \$18 - 25. Learn more at www.chabadofashland.org. Medford Armory, 1701 S Pacific Hwy, Medford.

US AND THEM

Nov. 9 from 1 - 3 pm. Learn more about "call-out" culture, a conflicting ideology that sows division and

to Talk About Dying," on Nov. 11. David Oas, author of "Non-official Cover Confessions," Nov. 14. Sofia Bogle, author of "Book Restoration Unveiled," Nov. 18. Amira Makansi, author of "Literary Libations," Nov. 21.

RCC HOST INFO MEETING IN SPANISH

Nov. 19 from 6 - 8 pm. This event is an opportunity for parents, students and the Latinx community to learn about RCC. RCC/SOU Higher Education Center, 101 S. Bartlett St, Medford.

Meetings

WOMEN'S FEMINIST CONSCIOUSNESS-RAISING GATHERING

Sundays from 3:30 - 5:30 pm. This group is for women to gather and discuss feminist issues amongst one another. Boss Up Studio, 1 W 6th St, Medford.

Food

ROGUE VALLEY GROWERS & CRAFTERS MARKET

March 7 - Nov. 21 on Thursdays from 8:30 am - 1:30 pm. Hawthorne Park, Medford. March 5 - Nov. 26 on Tuesdays from 8:30 am to 1:30 pm. National Guard Armory, 1420 E Main St, Ashland.

Film

IME AND LOVE, HERE AND NOW

Nov. 16 from 6 - 10 pm. Premiere of season two of Nate and Laura and How They Met, as well as Mindsick and Timekeys. Awake Cafe Gallery, 1757 Ashland Street, Ashland.

THE CENTURY OF THE SELF

Nov. 7 at 7 pm. This documentary asks deeper questions about the roots and methods of consumerism and commodification and their implications. Awake Cafe, 1757 Ashland St, Ashland.

THE CREEPY LINE

Nov. 14 at 7 pm. This film is an unsettling and eye-opening documentary revealing the stunning degree to which society is manipulated by corporations. Awake Cafe, 1757 Ashland St, Ashland.

MINIMALISM: A DOCUMENTARY ABOUT THE IMPORTANT THINGS

Nov. 21 at 7 pm. The film examines the many flavors of minimalism by taking the audience inside the lives of minimalists from all walks of life. Awake Cafe, 1757 Ashland St, Ashland.

THX 1138

Nov. 2 at 5 pm. Experience George Lucas' first feature film and produced by Francis Ford Coppola "THX 1138" on the silver screen, one night only. \$10. Pelican Cinema, 2643 Biehn St, Klamath Falls.

A WILL FOR THE WOODS

Nov. 14 at 7 pm. This award-winning film explores green burials, environmental benefits, and the idea that one can remain within the cycle of life. \$5-10

suggested donation. Ashland Public Library, 410 Siskiyou Blvd #2196, Ashland.

Wellness

COMMUNITY COUNSELING CENTER

The Community Counseling Center offers low cost, sliding-scale, professional counseling for individuals, couples, adolescents, families and children. \$40. Visit www.ccofashland.com or call 541-708-5436 for more information. The Phoenix Clubhouse, 310 N Main St, Phoenix.

AWARENESS THROUGH MOVEMENT WEEKLY FELDENKRAIS CLASS

Tuesdays from 6:30 - 8 pm. Unwind Your Spine! Mindful moves to regain lost mobility. We've all been brainwashed to believe decrepitude in inevitable after 50. Learn resilience for flexibility in mind and body. \$15-50, free for veterans. Learn more info at www.gabriellepullen.info. Feldenkrais Studio, 135 W. Main St., Jacksonville.

EVENING YOGA

Thursdays from 6 - 7 pm. Fostering Strength, Flexibility and Tranquility through the practice of Awareness in Breath, Meditation and Asana. Sundance Healing & Arts Yoga Studio, 220 SE H St, Grants Pass.

RETURN TO NATURAL, EMBODIED MOVEMENT

Mondays, Sept. 23 through Dec. 16 from 9 - 10:15 am. Learn how to release conditioned patterns of moving, thinking, feeling, & acting through developmentally-based movement explorations. Go to www.mindmovinglearning.com to register and learn more.

THE POWER OF MUSHROOM SUPPLEMENTS

Nov. 10 from 1:30 - 2:30 pm. Join us to discover the power of mushroom supplements and find the perfect mushroom for you. Learn more at naturalgrocers.com. Natural Grocers, 1990 N. Pacific Highway, Medford.

TASTY TURKEYS YOU CAN TRUST

Nov. 11 from 6:30 - 7:30 pm. Learn what makes our non-GMO turkeys different and make your Thanksgiving feast GMO free this year. Learn more at naturalgrocers.com. Natural Grocers, 1990 N. Pacific Highway, Medford.

REIMAGINING GREIF: HOW TO RESPOND TO DEATH DIFFERENTLY

Nov. 13 at 7 pm. Jennifer Mathews offers useful tools and new perspectives to consider as we navigate our temporary physical lives. \$25 suggested donation. Hidden Springs Wellness Center, 1651 Siskiyou Blvd, Ashland.

POSITIVE APPROACH TO ALZHEIMER'S AND DEMENTIA CARE

Nov. 9 from 9 am - 12 pm. The class is designed to help anyone who cares for an aging Oregonian learn more about how to support individuals with dementia and Alzheimer's and respond to behavioral challenges. Learn more at www.oregoncarepartners.com. Hampton Inn, 110 NE Morgan Lane, Grants Pass. 📍



LEARN ABOUT HEALTHY WAYS TO DEAL WITH GRIEF AT HIDDEN SPRINGS WELLNESS ON 11/13.

SOUND

Spanning Over Four Decades of Guitar Rock Greats

An Interview with Rickishane at the Talent Club

INTERVIEW BY ALAN ARMSTRONG



They are straight guitar rock: guitar, bass, and drums. They stay away from keyboards. (“We like it raw.”) Rickishane is made up of Rick Bolz, a pioneering 60s rocker, his two sons, Shane and Kish, and an “adopted into the band” son, who just happens—and somewhat confusingly—also to be named Shane.

In late October, I sat down with all four members of Rickishane at the Talent Club. Three years ago, this is where they had their first gig as a band. They perform many cover songs, spanning mostly the 60s through the 90s, with a couple of more recent ones punching in here and there—and they also currently are working on a full-length release of all original work, projected for release next summer. They take turns on the mic delivering up classic rock gems to their audience, each taking lead vocals on a different tune, which gives us the aural pleasure of a variety of vocal qualities, from rough or gravelly to smooth and clear.

Rogue Valley Messenger: Where are you guys from originally? How many of you are from this part of Oregon?

Rick Bolz: I’ve been here all my life, grew up in Phoenix. I was born in Portland. Moved back here when I was six months old.

Shane Bolz: I was born in Ashland. I grew up in Portland, and here.

Kish Bolz: Ashland

Shane Mahoney Bowman: Medford

RVM: Shane, when were you adopted into the Rickishane family?

SMB: About three years ago. I was playing in a band with some of Rick’s other friends that he had been in bands with like fifty years ago (The Neighb’rhood Childr’n). Rick came to fill in for one of them that was sick for one of our gigs, and later Rick was like “Something about you I like, could you come meet with us?” That was it; we kind of clicked and went from there.

RVM: Who are your biggest musical influences?

KB: My dad.

SB: I was going to say, these guys [indicating bandmates] right now for sure... John Bonham for sure. Anything that rocks, I’ll listen.

RVM: When I hear your song “These Are the Times,” I think of Clapton. Has anyone else ever made that association?

KB: No, but we’ll take it.

SMB: I’ve had people tell me that I look like a young Clapton. [Laughter] I don’t know if I see that.

RVM: You have a lot of covers on youtube. Do people refer to you as a cover band sometimes, and what do you think of that label?

RB: Well, we’re probably the most original cover band that you’ll ever hear.

KB: We put our own spin on each song.

RVM: How do you decide who sings what song? Is it as simple as the younger guys sing the more contemporary songs?

SB: No, not at all. What vocal fits. We all sing really different. It usually works out.

SMB: We’ve got a lot of different character to each of our voices and that fits with some songs a lot better than others and I know that Kish has got a really nice quality sound to his voice that fits a lot of the songs that I don’t think would come through the same if I was singing it.

RVM: The Talent Club’s website talks about your common DNA increasing the tightness of your sound where you can read each other better. Can you achieve the same thing when you play with any guy for a real long time, or is there something to be said about an even higher quality achieved with that common DNA factor making the connection even more solid?

KB: I think it makes it more solid. I never really had that connection when jamming with anybody else.

RB: You can gain a connection by playing with different individuals not related to you, but with the DNA factor, it rises even more so.

RVM: What do you guys want to make sure Southern Oregon knows about Rickishane?

RB: We like to be about community, and spread peace and love.

SB: That’s what music does. If you can tap into it whether you’re in the audience or whether you’re playing, it’s a pretty awesome feeling. We’re not trying to change the world, we just love playing music, you know, that’s the bottom line. It’s good quality family time. 🍷

RICKISHANE

8 pm, Friday, November 22.
Morrtons Pizza Sports Bar,
980 N. Phoenix Rd #105, Medford



**AFTER A SEXUAL ASSAULT
YOU ARE
NOT ALONE**

Free, 24/7 Medical Care at Any Hospital
Free Support Groups

For more information:
www.JacksonCountySART.org
jcsart@charter.net



OMAR'S "TAKE HOME" THANKSGIVING DINNER

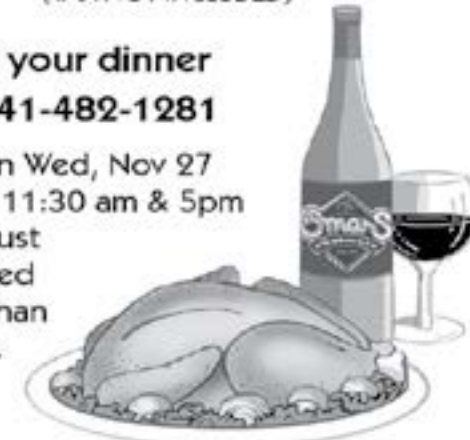
Don't feel like cooking this year? Let Omar's do it for you with a Traditional Thanksgiving Dinner for 2 or more people.

- Oven Roasted Garlic & Herb Turkey Breast
- Yukon Gold Garlic Whipped Potatoes
- Candied Pecan Green Beans
- Roasted Mushroom & Sausage Stuffing
- Sage Pan Gravy
- Fresh Ginger-Orange-Cranberry Relish
- Pumpkin Pie

\$32.95 per person
(TAX NOT INCLUDED)

Reserve your dinner today 541-482-1281

Pick up on Wed, Nov 27 between 11:30 am & 5pm
Dinner must be reserved no later than Nov 24th.



Lounge til 2:30am • Lunch M-F 11:30-2pm
Dinner Su.-Th. 5-9pm, Fri. & Sat. 5-10pm



challenge accepted

Southern Oregon University accepts the challenge of helping you find your path to a life of purpose. We offer 37 programs of study with traditional and online completion options. Campuses in Ashland and Medford, Oregon. We are a team dedicated to your success as you meet your challenge head-on and rise above it. Schedule a campus tour or counselor visit today.



SOU and you: *Challenge Accepted.*

SOU.EDU • 800-477-3377

CULTURE

Remembering History

Holocaust Survivor and Anne Frank's Stepsister Eva Schloss Speaks In Medford

BY PHIL BUSSE

This past summer, I traveled to Amsterdam with my daughters, and on our first day visited Anne Frank's house. My girls are 11 and 13 years old, the same ages that Anne Frank was when her family first hid from Nazis and then when she was discovered and taken to a concentration camp.

The house itself has been consumed by a massive, modern museum, but is still intact. The tour walks through the attic rooms where the Frank family lived for two years. The space is largely untouched by time, and even small details remain. I was most struck by a series of colored push pins in the wall near a door frame. They were, apparently, left there by Anne's father, Otto Frank. In the summer of 1944—75 years ago—Otto received intermittent reports about how Allied Forces were advancing across northern Europe, and liberating cities from Nazi control. As the troops moved closer, the pins neared the door frame, which essentially represented Amsterdam—and the Frank's freedom. Of course, that never happened, as the family were discovered and sent to concentrations camps, where Anne, her sister and mother died. Otto Frank survived, and helped publicize his daughter's diary which he famously discovered.

For me, those pins were small but powerful reminders about a future that could have been—where Allied troops reached the family in time and the 13-year old Anne was saved and survived. I looked across the room to see my two daughters, and felt a chill run through my body and a lump form in my throat.

It is, of course, not a novel emotion or response, as Anne Frank has captured an important moment in history and served as an enduring reminder about evil overpowering innocence—and as the tour guide pointed out, a particularly keen reminder during a contemporary political era in Europe and America that is particularly cruel to refugees who are trying to flee persecution.

Equally so, Anne's stepsister Eva Schloss will speak in Medford on November 11, somewhat fittingly on Veteran Day. Schloss both served as a witness to the fear and to hope—and, she has spent the past few decades sharing that history and, at 90 years old, is going strong.

Schloss was a childhood friend with Anne Frank, living just a block away in Amsterdam. In 1942, her family, like the Franks, went into hiding—and remained undetected by the Nazis for two years before a double-agent revealed their location and they were sent to the notorious Auschwitz. The Frank family also was discovered in 1944, and Anne also was shipped to Auschwitz

before being transferred to Bergen concentration camp where she died.

Eva's father and brother did not survive—a somewhat reverse image of survival for the Frank family, who famously lost Anne, her sister and her mother in the concentration camps.

The surviving members from both families returned to Amsterdam, where drawn together by grief and love, Eva's mom married Anna's father—and posthumously Eva became Anne's stepsister. In many ways, the two girls/women's lives can be seen as parallel universes, as Eva has lived seven-plus more decades, answering so many "what if" questions.

Like Anne Frank, Eva's life also has been defined by those years—of hiding, of persecution and survival—although Eva did not speak publicly about her experiences until after Otto Frank's death in 1980.

Since then, she has become a torchbearer for those memories, including a recent interview that was turned into a holographic display and a recent book. Schloss has been direct and candid about her experiences—and relating those to current social and political issues; earlier this year, she addressed high school students in California after social media showed them playing a game of beer pong in which the cups were arranged in the shape of a swastika and they were giving straight-arm Nazi salutes.



EVA SCHLOSS
COURTESY OF CHABAD OF ASHLAND

.....
EVA SCHLOSS IN MEDFORD
 6:30 pm, Monday, November 11,
 Medford Armory, \$18 - \$90

Art Watch



All Things Clay Annual Clayfolk Show

BY PHIL BUSSE

The shapes, molds and purposes that clay can become are really only limited by imagination—and at the 44th annual Clayfolk Show & Sale, that seems to be boundless. The artists participating are almost giddy about their experimentation and expressions with clay—from tea sets to outer-worldly beings, from earthen tones to retina-scorching hues, and from traditional to funky-mc-funk.

This event is an all-encompassing universe of clay-making, as much about showing off wares as it is about trying to teach how-to, as there are hands-on seminars throughout the weekend. For a more advanced class, check out Dennis

Meiners on Saturday, 3 pm. He has been creating approachable but intricate pots for nearly a half century, and is hosting a presentation on "finding story with texture."

.....
ANNUAL CLAYFOLK SHOW
 4 - 9 pm Friday, November 22;
 10 am - 7 pm Saturday, November 23;
 10 am - 4 pm Sunday, November 24.
 Medford Armory, 1701 S Pacific Hwy.

FOOD & Drink

Ashland's Place on the Culinary Map

Travel Ashland's Culinary Festival 2019

BY JEN ROBISON

Ashland is known for its many desirable features. The the picturesque hill and mountain views surrounding the Valley; the beautiful parks; the lively and unmistakable downtown center. Then there's SOU and the Oregon Shakespeare Festival bringing creative minds and tourism to the city every year. Ashland, for all intents and purposes, appears to be the center of arts and culture in the Rogue Valley. And, within that statement, is also food.

There are over 100 restaurants in Ashland, each offering a bite from about every corner of the world—and the Ashland Culinary Festival, produced by Travel Ashland, shows the world just how good and varied it is. For the 13th year running, the Ashland Culinary Festival showcases the cuisine, talent, and bounty of the area.

The event begins Thursday evening, November 7, with a VIP Top Chef Dinner that covers all the bases with local cheese sampling, specialty appetizers, wine tasting, and courses prepared by former winners of the Ashland Culinary Festival's Top Chef competition Neil Clooney, Franco Console, Chandra Corwin, David Georgeson, and Skye Elder. This dinner is already sold out this year, but keep it in mind for 2020.

Friday evening is the real kick off, with drinks and small plates offered as the Mixology (cocktail) competition commences. This year, 12 mixologists from top local bars compete in a four-round competition of challenges to name a victor. Jeffery Morgenthaler, renowned bartender and author of *The Bar Book*, and *Drinking Distilled*, will serve as a judge this year.

On both days, the large ballroom of Ashland Hills Hotel and Suites will be filled with vendors, craftspeople, and artisanal culinary creations, also with a score of workshops available all over the city, as well as in the event space at the hotel. Ashland Co-op will provide a workshop on Texas Brisket. Lithia Wine Garden will host an organic wine education class. Hearsay Restaurant will even house a workshop titled "Craft Cocktails and CBD Infused Bitters."

Last but very definitely not least will be the Top Chef competition. True to style for other cooking competitions, each round will present four talented chefs with a challenge to rise above. There will be a bountiful table of local ingredients and items to pull from, a theme, and a mystery ingredient introduced to throw ingenuity into high gear. Thanks to a set of professional mini-kitchens created by Cook's Kitchen for the event, attendees will get to watch the heat in person as each chef steps up to cook their way to victory.

The Junior Chef Competition runs Saturday morning. The winner of this competition earns a scholarship. Saturday afternoon and all-day Sunday brings on the Top Chef competition. These chefs are the best of Ashland, and competition is bound to be fierce. Already, four of the winning chefs from the previous 12 years of the Ashland Culinary Festival have gone on to win Iron Chef Oregon.

This year will be welcoming another celebrity-status judge, Chef Shaun O'Neale, author of *My Modern American Table*, and winner of Masterchef Season 7.



ASHLAND CULINARY FESTIVAL 2018

BOTH PHOTOS CREDIT: LINDSEY BOLLING



ASHLAND CULINARY FESTIVAL
November 7 - 10
Ashland Hills Hotel and Suites, 2525 Ashland St, Ashland
ashlandchamber.com/culinaryfestival

Mixed Up

The Ashland Culinary Festival Mixology Competition

BY NICK BLAKESLEE

Life didn't really turn out how I thought it would. Namely when asked what I wanted I wanted to be when I grew up, bartending wasn't really given as an option. I imagine it's generally frowned upon for a seven-year-old to say, "I want to be around as much alcohol as possible and spend most of my day getting people intoxicated when I grow up." (I can only imagine the sort of parent-teacher conference that would follow.) So I stuck with "astronaut" and caged my dream.

In all honesty, bartending can be much more than just pulling on tap handles and pouring vodka into a rocks glass with soda. For the uninitiated, bartending, and mixology in general, is very similar to cooking. There are good cooks and bad cooks, sometimes you just want some comfort food that comes in a box and other days you're looking for something more exotic. Cocktails are the same; some days call for the bitter brightness of a gin and tonic with lime, other days a fruity daiquiri is just what the doctor ordered. And in both, enjoyment doesn't just come from flavor, but presentation, environment, aroma, and company. God knows I feel like whiskey tastes better during family reunions.

The Rogue Valley has no lack for talented mixologists; I've been able to highlight them here over the past two years. I'd like to highlight one last event, worth anyone's time who wants to watch the magic of great mixology unfold.

Ashland Culinary Festival happens every year in November. It's an event that presents locals chefs, professionals and amateurs alike, in a competitive environment that tests the skills of all those involved. Four years ago, they added the mixology side of competition. As someone who's gone to a previous event, it's amazing to watch.

Twelve mixologists have been screened and chosen to compete in the event. Some spend their day jobs in the bar, others are simply hobbyists that have a drive, but all of them are wonderfully talented. Mixologists will have very little information beforehand; the goal of the event is to test their skills on the fly. Ingredients and style will be kept a secret until the moment just before the competition starts. Three rounds of drinks will find three finalists, while the fourth and last will be chosen as a Wild Card by a panel of judges to compete in the final round.

The head judge, Jeffery Morgenthaler, is an award-winning bartender and published author of the most recent title: *Drinking Distilled: a User's Manual*. He manages a six-time James Beard Awarded-nominated bar program, so it'd be safe to say he's an expert on the subject. Other judges include talented local in the hospitality business, Ava DeRosier; returning judge Kari Young and Oregon's Culinary Institute instructor, Raul Gonzalez.



MIXOLOGY COMPETITION CREDIT: GRAHAM LEWIS



MIXOLOGY COMPETITION CREDIT: LINDSEY BOLLING

Anyone who has purchased a weekend pass for the Culinary Festival get entrance to this Mixology event. Or tickets to just the Mixology Competition can be purchased separately. Ticket holders will be provided samples of alcoholic beverages as well as small bites for food. More importantly, they'll get to watch the magic of Mixologists making cocktails.

ASHLAND CULINARY FESTIVAL MIXOLOGY COMPETITION
5:30 pm, Friday, November 8
Ashland Hills Hotel & Suites, 2525 Ashland Street, Ashland
\$25, online. \$30, door

Klamath-Siskiyou
NATIVE SEEDS
grow native | grow wild

- NATIVE SEED PACKETS
- SEED COLLECTION CONTRACTING
- NATIVE POTTED PLANTS
- CONSULTATION

KLAMATHSISKIYOUSEEDS.COM | KLAMATHSISKIYOU@GMAIL.COM

Fine Arts & Crafts Sale
A BENEFIT IN SUPPORT OF ASHLAND ZEN CENTER

Friday, November 29 & Saturday, November 30
10:00 a.m. to 5:00 p.m.
Oregon Shakespeare Festival Welcome Center
Corner of E. Main and S. Pioneer, Downtown Ashland

Unique, Handmade Works of Art
Painting, ceramics, sculpture, prints, stained glass, collage, jewelry, wood, photography, basketry, textiles, home decor and specialty foods from Ashland Zen Center's gardens.

Relaxed Holiday Shopping Including a Silent Auction and Raffle
Prices for Every Budget (541) 552-1175 info@ashlandzencenter.org

WALKABOUT BREWING COMPANY

Come have a beer with us!

- NOV. 10 - 4 pm
Josh Capehart
- NOV. 17 - 4 pm
Watson House
- NOV. 24 - 4 pm
Greg St. Clair
- DEC. 1 - 4 pm
Pete Herzog
- DEC. 8 - 4 pm
Taurie Michele

921 Mason Way - Medford, OR - 541-734-4677
www.walkaboutbrewing.com

Give the Gift of Gear This Year!
Tie-dye shirts, hats, kids-wear, outerwear, glassware, totes, gift cards & more!

Kaleidoscope
Pizzeria & Pub

kaleidoscopepizza.com
541-779-7787

Dine In: 3084 Crater Lake Hwy • To Go: 1923 Delta Waters Rd

SCREEN

A "Reel" Concern

The Wild & Scenic Film Festival Returns to the Rogue Valley

BY CATHERINE KELLEY

Peek into the worlds of newts, German browns, ice sheets and grizzlies at the 7th annual Wild & Scenic Film Festival "On Tour" on November 8. The night of short film, benefitting southern Oregon's Rogue Riverkeeper, aims to entertain while encouraging activism toward preserving and protecting the natural environment and its resources.

An offshoot from KS Wild specializing in aquatic advocacy, Rogue Riverkeeper utilizes the Clean Water Act to oversee the health and preservation of clean water and fish populations throughout the Rogue River Basin's 3.3 million acres of watershed.

In 2012 they partnered with California's Wild & Scenic Film Festival Organization's "On Tour" program, enabling them to host a festival of their own as a fundraiser and catalyst to spotlight their environmental missions.

"We're seeing great challenges to the Clean Water Act right now," states Sara Mosser, Rogue Riverkeeper Outreach Coordinator. "When regulations are loosened over our valuable resources we see negative impacts to our waterways, so we work to protect our natural resources before they get destroyed."

The watchdog group also stands at the frontlines of the Jordan Cove LNG (liquid natural gas) Pipeline Project, a controversial proposal that has seen permit and denial processing and stirred reactions from southern Oregon residents for 14 years.

"It's a major threat, crossing the Rogue River and its tributaries many times," Mosser adds. "But community comes out in force over and over again saying very clearly that we do not want this pipeline to go through our area."

Along with maintaining *The Swim Guide* website, publicizing water safety and quality test results at popular recreation areas, they also address polluted urban runoff, treated wastewater and suction dredge mining issues. Most recently, they joined with several local entities to help improve and maintain Bear Creek, a popular, inner-city tributary running through Jackson County before meeting the Rogue River.

"We're looking at how storm water is managed and irrigation practices are impacting it, as well as enhancing the riparian barriers," says Mosser. "Not just for recreation but for its beauty and the resource it is to our community. Right now it's salmon season and there are fall Chinook coming back to spawn, which can be pretty shocking for an urban creek."

This year's film festival also celebrates their 10th year as regional water defenders, with special acknowledgements and celebrations during the festivities. Ten award-winning shorts have been selected offering an entertaining mix of funny, touching, politically relevant and water focused films.

Some of the picks include the short film *Big World*, which documents Eddie Bauer athlete and father, David Morton's, endeavors to "unplug" his son, Thorne, and take him on a remote journey through Western Nepal's remote river system on a paddleboard.



EDDIE BAUER ATHLETE, DAVID MORTON WITH SON, THORNE, PADDLEBOARD WESTERN NEPAL RIVERS IN BIG WORLD.
CREDIT FOR BOTH: DAVID MORTON

Getting beyond the effects of war, Vietnam veteran Doug Peacock journeyed into the wilderness of Montana and Wyoming backcountry and had a life-altering encounter with a giant grizzly. "When somebody does something great like that for you, you're in debt...you pay it back," he says. After immersing with and filming grizzlies for years, and then learning legislation was working to remove them from the Endangered Species Act, the soldier of war turned eco-warrior. His enthralling, original footage of the world of grizzly bears became the genesis for the short documentary, *Grizzly Country*, and his foundation Save the Yellowstone Grizzly.

Three Iraq War veterans return to its mountains in *Adventure Not War*, not to fight, but to heal and experience the culture and natural landscape of Iraq beyond its war-torn image.

The awe-struck exclamations of passersby looking through a giant, portable telescope in *A New View of the Moon* excite film-goers to see the moon like never before.

The festival doors open at 5 pm with music, beer and wine, food and a silent auction followed by screenings at 6:30 pm.

WILD & SCENIC FILM FESTIVAL
6:30 pm, Saturday, November 8
Ashland Historic Armory, 208 Oak Street, Ashland
\$10 - \$50

www.roguefemmephotography.com

Rogue Femme PHOTOGRAPHY

boudoir + intimate portraiture

Pregnant? Start with us!

Our patients say...
"I wasn't rushed. I was listened to."
"Kind people, comfortable facility, and they respected my privacy."
"They answered all of our questions."

Free health care services and resources, including...
 + Pregnancy testing
 + Limited OB ultrasound
 + Nurse consultation
 ...with our supportive and caring medical team.

ACCREDITATION ASSOCIATION for AMBULATORY HEALTH CARE, INC.

Scan to schedule or learn more!

 pregnancy care center

Call or visit us online for an appointment.
 541.479.6264 714 SE 8th St.
 www.gppregnancy.com Grants Pass

CASH

FOR YOUR OLD GOLD, SILVER & DIAMONDS

Father & Son Jewelers

126 East Main St. Medford
541-774-8900

We Offer **FREE** Watch Battery (Most Brands) & Installation

We Repair ALL Types of Jewelry... plus Custom Work!

FatherAndSonJewelryMedford.com

Talent Health Club

Southern Oregon's Most Trusted Dispensary

DAILY DEALS:
 Mon: 20% OFF Edibles and Topicals
 Tue: ANY (2) grams for \$20 (tax incl.)
 Wed: Special PreRoll Joints only \$5
 Thur: 20% OFF ALL Cartridges
 Fri: \$40 and \$50 1/4oz's of Flower
 Sat: 20% OFF ALL Dabbable Extracts
 Sun: Essence Farm Flower: \$3/g & \$8/g

One Gram of Extract or 1/8th oz. of Flower or One Cartridge
\$25 or less...ALWAYS

Happy Hour 2-4pm MONDAY - SATURDAY +++ Rotating DEALS GONE WILD!!!


Open 7 Days
Mon-Sat
 10am-8pm
Sundays
 10am-6pm

Check out our budtender reviews of local products in the Weed Garden section at the end of every Messenger!

1007 S. Pacific Hwy + Talent, Oregon + 541.897.4111

true south SOLAR

Call us today for a free consultation
 800.947.1187 | truesouthsolar.net



SCHNEIDER MUSEUM of ART
 SMA.SOU.EDU | 541-552-6245
 555 INDIANA STREET | ASHLAND, OR
 EXHIBITION ON VIEW THROUGH DECEMBER 14



FREE FAMILY DAYS
 SATURDAYS | NOVEMBER 2,
 NOVEMBER 16, & DECEMBER 7
 10AM - 1PM



FAVELA TUESDAY TEAM
 TUESDAYS THROUGH
 DECEMBER 10 | 4 - 8PM



CREATIVE INDUSTRIES DISCUSSION
 JENNIFER LONGSHORE
 NOVEMBER 7 AT 7PM
 MEESE AUDITORIUM
 FREE ADMISSION



PARKING
 LOCATED AT THE CORNER OF
 SISKIYOU BOULEVARD AND INDIANA
 STREET ON THE SOUTHERN OREGON
 UNIVERSITY CAMPUS.

(TOP) JUDITH HERNANDEZ, "EVE AWAKENS"; SERIGRAPH, EDITION 74, 28"x30"; COURTESY OF SELF HELP GRAPHICS & ART
 (MID LEFT) FLOOR MACHOS SUPREME, 2018, CARDBOARD, PAPER, GLUE AND PAINT PHOTO: KATY ANDERSON, HOUSTON CENTER FOR CONTEMPORARY CRAFT
 (MID RIGHT) JUSTIN FAVELA, PHOTO: MIKAYLA WHITMORE
 (BOTTOM LEFT) JENNIFER LONGSHORE, PHOTO: JASON HAYES




ROGUE VALLEY MESSENGER, Ford Family Foundation, Platt Anderson Cellars, LOCALSGUIDE, Ashland, Oregon Arts, Rotary Club of Ashland, OREGON CENTER FOR THE ARTS AT SOUTHERN OREGON UNIVERSITY

SOUTHERN OREGON HISTORICAL SOCIETY
 SINCE 1946
 MAKING HISTORY TOGETHER

Home to one of the finest and largest research libraries and archives in Oregon. Historical records and rare film footage, over 1,000 oral histories, hundreds of maps, architectural drawings, diaries, and journals.

SOUTHERN OREGON HISTORICAL RESEARCH LIBRARY



Hours:
 Tuesdays – Saturdays, Noon to 4 pm
 Saturday Tours of the Archives: 2 – 4 pm

Admission:
 FREE for SOHS Members & Jackson County Residents
 \$5/visit for others.

SOHS History Center & Research Library
 106 N. Central Avenue, Medford OR
 Call 541-773-6536, or visit the SOHS website www.sohs.org
 and Southern Oregon Historical Society and Hanley Farm Facebook Pages



HAPPY THANKSGIVING

From all of us at the
Rogue Valley Messenger

Caldera BREWING COMPANY
 ASHLAND, OREGON
calderabrewing.com



Need Beer?
 Caldera Brewing is now offering kegs, cans and bottles dock sales direct to the public

Dock Sales Hours: Monday-Friday 8 am-4 pm
 590 Clover Lane • Ashland • OR • 97520 • 541-708-6001

Dock Sales: Go around to the back of the building and enter through the right hand door
 Credit or Debit Cards only • No cash or checks

Go Here

After the Turkey; Take a Walk!
 Manageable Distance, Minimal Elevation Gain Strolls for the Whole Family

BY CATHERINE KELLEY

Between that last morsel of pumpkin pie and racing out the door to conquer the cheapest PlayStation or Samsung, there's digestion. A walk after your Thanksgiving meal might ease that full belly, along with the pressures of the holiday shop-a-thon pandemonium. The last, and best, course of the meal could happen outdoors.

For an after-feast promenade through nature at its best, tuck \$5 aside for parking at Touvelle State Park, where Table Rock Road meets the Rogue River. Although there's no guarantee you'll see wild turkeys during their national holiday, there will be other wildlife you'll catch in the Denman Wildlife Refuge, located on the east side of the park. The trail loop is less than a mile long, giving you plenty of time to mosey beside the river and through all the watery ecosystems before the park closes at dusk.

Do your wee ones hit a dessert-induced sugar high every year? Head to Gold Hill Sports Park on Hwy 234 northeast of town. Skateboarding and disc golf are within walking distance, as well as a paved pathway beside the river where you can walk your pooch, including the one on a leash.

Depending on your need to escape, and how early you'll down that last bite, the drive to Lake Selmac may be worth every mile. The Lake Trail, at the south end, is a leisurely two-mile digestive stroll along the tree-lined shore. Once again, worth the \$5 parking fee, and remember to explore before it closes at dusk.

If you simply can't stand the thought of abandoning the sales day stratagem, you may enjoy parking, if you can, at the first store on your list and cautiously strolling to the front door. Here, you can catch a breather while watching your opponents from a safe distance. It may be quite exhilarating to just observe the pack in action for awhile before heading inside. The elusive Black Friday shopping cart has been known to appear out of nowhere if you stay on the alert and express your Thanksgiving gratitude.

This article originally ran in our 05.20 issue.



Go Here

One of Christmas' Oldest Traditions Where to (Legally) Cut Your Own Christmas Tree

BY JORDAN MARIE MCCAUF

One of the fondest Christmas memories anyone can create is hunting for one's own Christmas tree. For some families they find their tree within the first couple minutes and then spend the rest of the day sledding, having a spirited snowball fight, and drinking hot chocolate. For others, hunting for a Christmas tree is meticulous work to find the absolute perfect tree that will light up the home once it's decorated. Southern Oregon offers plenty of areas and types of trees to legally cut your own Christmas trees. Here are a few options locals visit every year to find their tree:

- **Fish Lake Area:** Brown Mountain Road near Fish Lake is 35 miles northeast of Medford and offers beautiful noble fir trees. The roads are well-maintained and the landscape is flat enough to easily traverse through the snow in pursuit of the perfect tree. However, there are more than a few ideal sledding hills as well. If there's enough snow, of course.

- **Rancheria Road:** Rancheria Rd in the Butte Falls area offers picturesque silver tips trees. Tree cutters should be cautious of areas where tree cutting is restricted. Maps are available to show which areas are legal and illegal to cut once a permit is purchased.

- **Old Baldy Road:** The area near Dead Indian Road is home to hiking trails and views of Old Baldy, an old fire lookout site. Also in the area are destinations to legally cut Christmas trees. With a well-known hiking trail near the Pacific Crest Trail, Old Baldy Road offers an ideal location to hunt for a Christmas tree and spend a full day outdoors hiking in the snow.

Southern Oregon locals are lucky to have more than one place to legally cut their own Christmas trees. Remember first and foremost to purchase the five



dollar cutting permit before going out and stick to legal cutting locations in Medford District BLM-administered lands.

The rules and regulations surrounding cutting your own Christmas tree are simple. Trees must be less than 12 feet tall, you can only cut a tree within 15 feet of another tree, and tree stumps must be less than 12 inches after cutting. For more information about where to purchase a permit and legal cutting locations, visit fs.usda.gov.

This article originally ran in our 05.21 issue.

WELLNESS

A Novel Treatment Approach Allergies and Immune Dysregulation in Chronic Inflammatory Illness

BY DR. CORY TICHAUER

An unfortunate dice roll of genetic susceptibility and environmental exposure, immune dysregulation underlies almost every chronic illness on some level and encompasses a wide range of conditions to varying degrees of severity. From simple inhalant allergies to life-threatening autoimmune diseases, more than a third of the population of America deals with one or more of these issues. Unfortunately, all of these problems are also increasing in prevalence due to a myriad number of potential factors, all of which affect our intestinal microbiome and disrupt other natural immune barriers.

Acting as catalysts, toxic metals, artificial and processed ingredients, herbicides, pesticides, mold toxin, refined sugar, Wi-Fi, 4G and 5G electro-smog and glyphosate are just a few of the many players capable of altering genetic expression and exploiting weaknesses in our unique genetic code. Combined with additional factors, this disruption to normal physiology ultimately creates an immunologic "breaking-point."

Some of these additional factors include: A lack of natural exposure to various pollens and animal dander during the first 7 years of immune development. Introduction of foreign antigenic material into the body before adaptive immunity develops or thymic maturation can occur. Exposure to a viral, bacterial or protozoal infection that either triggers an autoimmune reaction through molecular mimicry or amplifies immune mediated inflammation due to its persistence in the body. Whatever the cause or trigger, allergy and autoimmunity represent a loss of appropriate immune "tolerance."

Unbeknownst to many, there is an effective way to address this commonly found issue! Low Dose Allergy (LDA) and Low Dose Immunotherapy (LDI) represent novel ways to induce production of antigen specific T-regulatory or T-suppressor cells in the body as a way of restoring immune tolerance to most environmental allergic triggers as well as the endogenous proteins involved with autoimmunity.

Initially coined enzyme-potentiated desensitization, treatment of allergies (LDA) involves administering a combination of a unique enzyme with a food, inhalant or chemical mix every seven to eight weeks.

LDI is a newer therapy that operates on similar principles but needs to be more individualized and is designed to address sources of inflammation stimulated from *within* the body itself. While some of these antigen mixtures contain known proteins involved in autoimmunity such as myelin, collagen or GAD-65, many others involve the use of certain bacterial, viral or parasitic organisms, often in specific combinations such as a Lyme, UTI or skin flora mixture.

The premise behind this is twofold. On the one hand, chronic inflammation can be due to the body continuing to be hyper-reactive to the presence of a latent or non-infectious organism that cannot be eliminated, such as Borrelia, Strep, Candida, EBV or clostridia.

On the other hand, many autoimmune or immune mediated conditions such as arthritis, fibromyalgia, narcolepsy, unexplained neuropathy, neurodegenerative disorders, PANDAS, psoriasis and inflammatory bowel disease, to name a few, were initially triggered by immunologic (cross)-reactions with specific microorganisms. Examples of this include: Rheumatoid arthritis triggered by reactions to Proteus or Klebsiella, Hashimoto's thyroiditis from Yersinia, interstitial cystitis from E. coli, Vitiligo and alopecia from H. pylori, Crohn's disease and Ulcerative Colitis from Mycobacteria, fibromyalgia due to Candida species and even OCD and anxiety from Streptococcus bacteria.

After determining the appropriate dosage and antigen mix that alleviates symptoms for a full two months (the lifecycle of a T-cell), treatment is then administered every eight weeks like in LDA. After a period of time, the body develops immune "memory" cells and therapy can then be delayed by progressively longer periods of time



DR. CORY TICHAUER

without seeing a return of symptoms. This is in stark contrast to standard allergy shots which typically need to be continued for a life-time in order to maintain a suppressive effect on the immune system in order to prevent a rapid return of symptoms.

Moreover, unlike traditional allergy shots which have a relatively high frequency of adverse reactions, the lower and more individualized doses used in LDA and LDI have never resulted in a single reported cases of anaphylaxis in the hundreds of thousands of doses administered over the last 55 years.

The goal with LDI and LDA is to reestablish normal immunological balance with environmental allergens, foods, chemicals or possibly germs currently or previously found within your body's ecosystem and all its trillions of microbes, so that the inflammation will calm down or stop entirely.

In this way, your symptoms can eventually go away, you can eat foods or go wherever you like without getting reactions and any remaining microorganisms directly or indirectly involved in your disease process can continue to exist as unavoidable cohabitants in your body. If you are like most people with these illnesses who have tried numerous other therapies only to find none or minimal benefit, it actually increases the likelihood that LDA/LDI will be effective because your condition is probably immune related at some core level.

JOSEPHINE COUNTY
Cultural COALITION
PO Box 1086
Grants Pass, OR 97528
jococulturalcoalition.org
info@jococulturalcoalition.org

TWO OAKS STUDIO LLC
LANDSCAPE ARCHITECTURE & ECOLOGICAL DESIGN
LISTEN • COLLABORATE • ACTUALIZE
TWOOAKSSTUDIO.COM / (541) 899-6895
MONDAY - FRIDAY 9AM TO 5PM

OVER 20,000 READERS!

ON STANDS FOR 2 FULL WEEKS!

ONLY FREE PUBLICATION IN THE REGION!

PLACE YOUR AD HERE!

HALF THE PRICE, QUADRUPLE THE IMPACT!

The best thing about our paper is our over 20,000 readers are *willingly* picking the paper up. This is not something that is sent to their mailbox and recycled; it is purposefully picked up and read.

Contact us today:
Advertise@RogueValleyMessenger.com

FREE

Although free for our readers, the *Messenger* is not free to publish. It is a nonprofit organization that runs on a shoestring budget. What sustains us is our advertisers, a number of volunteers and perhaps you.

BECOME A CONTRIBUTING MEMBER TODAY!

Just like public radio, we rely on member support. \$5/month helps the Messenger sustain its services. Join today: Patreon.com/RogueValleyMessenger

FREE

THE ROGUE VALLEY MESSENGER

Finding Your Sanity In an Insane World

Saturday, Dec. 14

1/2-Day Conference - Ashland Hills Hotel

40% Discount Ends Nov. 26

Lori Lorenz Marc Strauch Jennifer Margulis Daniel Sheehan Will Wilkinson

RVML.ORG
ROGUE VALLEY METAPHYSICAL LIBRARY
Produced by RVML

Architects of the New Paradigm
ANP CONFERENCE.com

REINHOLDT & O'HARRA INSURANCE

AMERICAN BRADY GROUP

COMPOSITE LIVING PARTNERS

RVML.ORG

DID YOU KNOW...

- The *Rogue Valley Messenger* is read by over 20,000 residents and visitors?
- The back of the paper has the **best exposure** in the entire paper?
- The *Rogue Valley Messenger* has the **most affordable ad rates** around?
- And we have **open ad space** on our backboard!

Contact us today to find out how to advertise YOUR business before it's too late. Spots are filling up fast.

541.708.5688 | Advertise@RogueValleyMessenger.com



New FDA Rules Bust Hemp Boom?

Remember that saying, “Be careful what you wish for?” Well, the heavy population of hemp-CBD advocates who have been demanding rules to govern this newly legalized crop just got our wish—in the worst way. One hundred sixty-one pages of new rules just took a pot-shot (pun intended) at our burgeoning southern Oregon hemp industry. As I’ve bragged about before in this column and on the *Local Smoke Radio Podcast*. . . and pretty much everywhere I go: southern Oregon has the best, smokable, boutique hemp-CBD flower in the country. That is all about to end.

At least for the next two years. Because starting on January 1st, 2020, the new FDA hemp rules take effect. Part of those rules include more stringent sampling and testing—overseen by the DEA. One particularly crucial detail is that the top two inches of flower from the plant will be what is tested for total THC (to ensure 0.3 percent or less). If levels of THC do not fall under that mark . . . the crop must be destroyed.

According to *Oregon CBD*, one of the world’s leading producers of high-CBD hemp seeds, “No high cannabinoid content, type III (CBD) plant variety in existence can meet this strict test unless harvested early or is genetically modified. This rule eviscerated the trimmed CBD flower market for 2020. Gone. No one, including us at *Oregon CBD*, has CBD seed varieties that can be trimmed and sold under these new rules.”

With 4,500 permits issued in Oregon alone in 2019, I can imagine this is not what everyone signed up for when they heard “CBD gold rush.” Particularly here in Jackson and Josephine counties where we grow some of the best cannabis in the world—whether it be high-CBD, high-THC or some other combination of cannabinoids, terpenoids and that extra little ingredient: *love!* This was supposed to be our cash cow, baby!

From a business perspective, the writing is on the wall. Make your moves quickly. Secure what you can to keep your new hemp and/or CBD business alive until the permanent rules are released in two years. From the community perspective: **SUBMIT YOUR COMMENTS. NOW!** From the time the rules are released we, the public, have 60 days to submit comments on these rules. Southern Oregon, I sure hope you have something to say about this.

Our newly legal cash crop could all get snatched away with rules that, to me, are not “in the spirit of the game”. Shawn Hauser, partner and chair of the hemp and cannabinoids practice group at Vicente Sederberg LLP, said, “These provisions feel like relics of prohibition and come at a risk and expense to farmers, but they do not come as a surprise. It takes time to transition from prohibition to a regulatory model.”

But I, too, am not surprised. Historically, “hemp” has a more industrial connotation to its definition, bringing up thoughts of rope, hippie bracelets, textiles and fields that look more like thick bamboo than smokable cannabis. “Marijuana,” or “high”-THC cannabis (over 0.3% THC), brings up, well—*different ideas!* If it were all made legal, we would be able to more freely utilize each different member of the species and each part of the cannabis plant for any number of potential purposes from medicine to food to textiles and beyond.

But as it is, regulations are what block us from using the same plant to do many different things—as people have always done with cannabis—and these new regulations will block a lot of what was great about the hemp-CBD boom. But maybe weed will be legal next year anyway.

Please, go submit your comments to the FDA.

FREE WILL ASTROLOGY Week of November 7

SCORPIO (Oct. 23-Nov. 21): Studies suggest that on average each of us has a social network of about 250 people, of whom 120 we regard as a closer group of friendly acquaintances. But most of us have no more than twenty folks we trust, and only two or three whom we regard as confidants. I suspect that these numbers will be in flux for you during the next twelve months, Scorpio. I bet you’ll make more new friends than usual, and will also expand your inner circle. On the other hand, I expect that some people who are now in your sphere will depart. Net result: stronger alliances and more collaboration.

SAGITTARIUS (Nov. 22-Dec. 21): I blame and thank the Sagittarian part of me when I get brave and brazen enough to follow my strongest emotions where they want to lead me. I also blame and thank the Sagittarian part of me when I strip off my defense mechanisms and invite the world to regard my vulnerabilities as interesting and beautiful. I furthermore blame and thank the Sagittarian side of me on those occasions when I run three miles down the beach at dawn, hoping to thereby jolt loose the secrets I’ve been concealing from myself. I suspect the coming weeks will be a favorable time to blame and thank the Sagittarian part of you for similar experiences.

CAPRICORN (Dec. 22-Jan. 19): Persian polymath Avicenna (980–1037) wrote 450 books on many topics, including medicine, philosophy, astronomy, geography, mathematics, theology, and poetry. While young, he tried to study the *Metaphysics* of Aristotle, but had difficulty grasping it. Forty times he read the text, even committing it to memory. But he made little progress toward fathoming it. Years later, he was browsing at an outdoor market and found a brief, cheap book about the *Metaphysics* by an author named al-Farabi. He read it quickly, and for the first time understood Aristotle’s great work. He was so delighted he went out to the streets and gave away gifts to poor people. I foresee a comparable milestone for you, Capricorn: something that has eluded your comprehension will become clear, at least in part due to a lucky accident.



AQUARIUS (Jan. 20-Feb. 18): In addition to being a key figure in Renaissance art, fifteenth-century Italian painter Filippo Lippi had a colorful life. According to legend, he was once held prisoner by Barbary pirates, but gained his freedom by drawing a riveting portrait of their leader. Inspired by the astrological factors affecting you right now, I’m fantasizing about the possibility of a liberating event arriving in your life. Maybe you’ll call on one of your skills in a dramatic way, thereby enhancing your leeway or generating a breakthrough or unleashing an opportunity. (Please also re-read your horoscope from last week.)

PISCES (Feb. 19-March 20): “Stand high long enough and your lightning will come,” writes Piscean novelist William Gibson. He isn’t suggesting that we literally stand on top of a treeless hill in a thunderstorm and invite the lightning to shoot down through us. More realistically, I think he means that we should devotedly cultivate and discipline our highest forms of expression so that when inspiration finds us, we’ll be primed to receive and use its full power. That’s an excellent oracle for you.

ARIES (March 21-April 19): Aries psychologist James Hillman said we keep “our images and fantasies at arm’s length because they are so full of love.” They’re also quite flammable, he added. They are always on the verge of catching fire, metaphorically speaking. That’s why many people wrap their love-filled images and fantasies in metaphorical asbestos: to prevent them from igniting a blaze in their psyches. In my astrological opinion, you Aries folks always have a mandate to use less asbestos than all the other signs—even none at all. That’s even truer than usual right now. Keep your images and fantasies extra close and raw and wild.

TAURUS (April 20-May 20): Poet James Merrill was ecstatic when he learned the Greek

language. According to his biographer, he felt he could articulate his needs “with more force and clarity, with greater simplicity and less self-consciousness, than he ever could in his own language.” He concluded, “Freedom to be oneself is all very well; the greater freedom is not to be oneself.” Personally, I think that’s an exaggeration. I believe the freedom to be yourself is very, very important. But for you in the coming weeks, Taurus, the freedom to not be yourself could indeed be quite liberating. What might you do to stretch your capacities beyond what you’ve assumed is true about you? Are you willing to rebel against and transcend your previous self-conceptions?

GEMINI (May 21-June 20): Musician Brian Eno made a deck of oracular cards called *Oblique Strategies*. Each card has a suggestion designed to trigger creative thinking about a project or process you’re working on. You Geminis might find it useful to call on *Oblique Strategies* right now, since you’re navigating your way through a phase of adjustment and rearrangement. The card I drew for you is “Honor thy error as hidden intention.” Here’s how I interpret it: An apparent lapse or misstep will actually be the result of your deeper mind guiding you to take a fruitful detour.

CANCER (June 21-July 22): We devote a lot of energy to wishing and hoping about the meaningful joys we’d love to bring into our lives. And yet few of us have been trained in the best strategies for manifesting our wishes and hopes. That’s the bad news. The good news is that now is a favorable time for you to upgrade your skills at getting what you want. With that in mind, I present you with the simple but potent wisdom of author Maya Angelou: “Ask for what you want and be prepared to get it.” To flesh that out, I’ll add: Formulate a precise statement describing your heart’s yearning, and then work hard to make yourself ready for its fulfillment.

LEO (July 23-Aug. 22): What are the key parts of your life—the sources and influences that enable you to be your most soulful self? I urge you to nourish them intensely during the next three weeks. Next question: What are the marginally important parts of your life—the activities and proclivities that aren’t essential for your long-term success and happiness? I urge you to corral all the energy you give to those marginally important things, and instead pour it into what’s most important. Now is a crucial time in the evolution of your relationship with your primal fuels, your indispensable resources, your sustaining foundations.

VIRGO (Aug. 23-Sept. 22): “When she spoke of beauty, he spoke of the fatty tissue supporting the epidermis,” wrote short story author Robert Musil. He was describing a conversation between a man and woman who were on different wavelengths. “When she mentioned love,” Musil continued, “he responded with the statistical curve that indicates the rise and fall in the annual birthrate.” Many of you Virgos have the flexibility to express yourself well on both of those wavelengths. But in the coming months, I hope you’ll emphasize the beauty and love wavelength rather than the fatty tissue and statistical curve wavelength. It’ll be an excellent strategy for getting the healing you need.

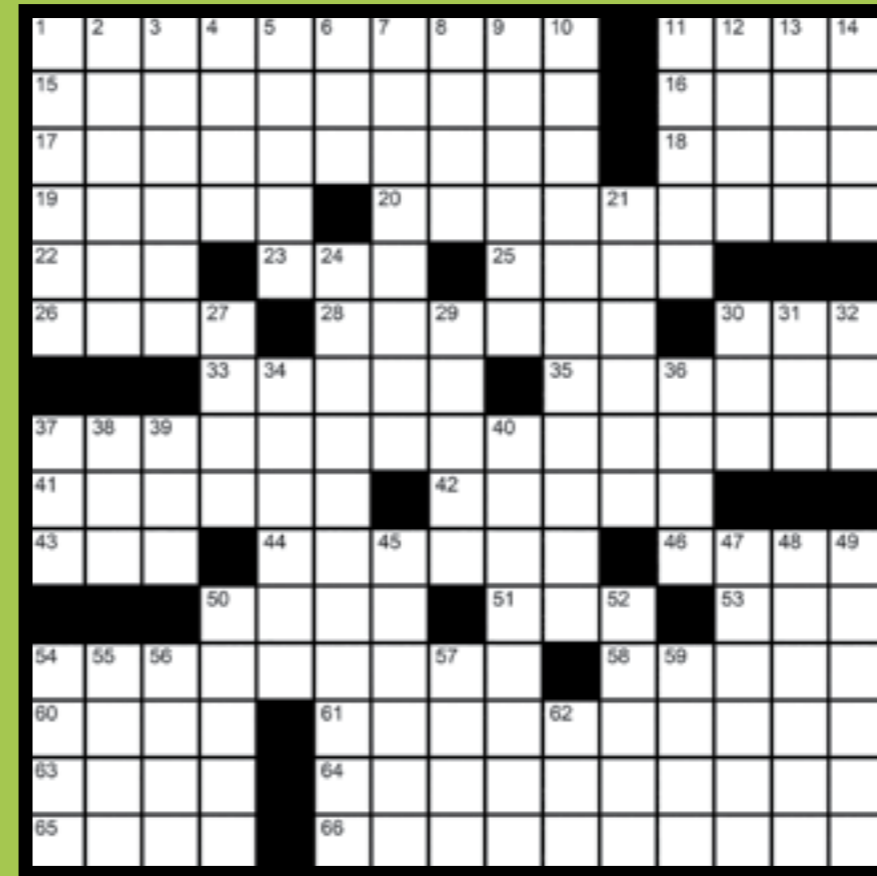
LIBRA (Sept. 23-Oct. 22): Libran blogger Ana-Sofia Cardelle was asked, “What is your signature perfume?” She said she hadn’t found one. But then she described how she would like to smell: “somewhere between fresh and earthy: cinnamon and honey, a rose garden, saltwater baked in the sun.” The coming days will be an excellent time to indulge in your own fantasies about the special fragrance you’d like to emanate. Moreover, I bet you’ll be energized by pinpointing a host of qualities you would like to serve as cornerstones of your identity: traits that embody and express your uniqueness.

[Editor: Here’s this week’s homework:]

You don’t have to believe in ideas that make you sad or tormented. Drop them. [FreeWillAstrology.com](#)

REC ROOM

“NOTHING IS AS IT THEMES” THEMELESS THIS TIME. — MATT JONES



ANSWERS AT ROGUEVALLEYMESSENGER.COM

Across

- They may be moved higher to prevent stealing
- Green beans, e.g.
- Line from a permissive judge
- Moving feature of a Jurassic Park pinball machine
- Skype predecessor
- Onetime “Fashion Emergency” host
- Pandora releases
- Like notation in some high school classes
- Make equal
- “Grand Ole Opry Live” channel, once
- Filing material?
- Manuscript enclosure, for short
- Trickster god of African folklore
- “George of the Jungle” creature
- Yielded under pressure
- Skippy Charms bit
- World’s oldest active endurance car race
- Saffron-and-rice dish
- Concert add-on?
- Patient observers, for short
- Daughter of Cyrus and mother of Xerxes (hidden in LOS GATOS-SARATOGA)
- Meal prep boxes
- Kristen of the upcoming “Wonder Woman 1984”
- X-___ large
- Dance-drama of Japan
- Bars and clubs, say
- Czech Republic capital, to locals
- “Largo al factotum,” e.g.
- Too steep
- Phrase
- Like a field for horses, perhaps?
- City that hosted the Winter Olympics 6 days after Elizabeth II took the throne
- Sextant forerunners

Down

- Musk-making mammals
- Rachel’s “The Favourite” costar
- Radio staples
- “When the Lights Go Down” critic Pauline
- “___ on Jeopardy” (“Weird Al” Yankovic parody)
- ’70s prog rock supergroup, for short
- Astronomer Kepler
- Deserter status
- Greet (the new year)
- Stays away
- Rigid
- “Harry Potter” librarian ___ Pince
- “...chame la Culpa” singer Lovato
- Boardroom fixture?
- Basement fixture
- Athlete who once said “Labels are for filing. Labels are for clothing. Labels are not for people.”
- Green New Deal concern, for short
- “___ Life” (Peter Mayle book)
- “13th” documentarian DuVernay
- Cross product
- Unsure syllables
- Cafe designation
- Stop on the Trans-Siberian Railway
- 1400, for legionnaires?
- Record label for acts like Cocteau Twins and Bon Iver (and a year in the reign of Emperor Augustus)
- “___ a real nowhere man”
- Nurturing sort
- Gothic arches
- Riding with the meter running
- “I’ve had it up ___!”
- “___ back, tell a friend” (Eminem lyric)
- Company that makes the Slip ‘N Slide and Frisbee
- Earth Day setting
- Its HQ is in Brussels
- Mad moods
- Word in a series of Larsson titles
- Boba not found in tea
- First Atlantic hurricane “R” name to be used twice
- Con con

©2019 Jonesin’ Crosswords
(editor@jonesincrosswords.com)

SUDOKU NO. 237 - TOUGH

	2		1		7	4		
5			2		8			
7					8		3	
2			8					
		9	7		2	5		
				1				9
	6		8					3
		4		6				8
		2	5		4			7

To complete Sudoku, fill the board by entering numbers 1 to 9 such that each row, column and 3x3 box contains every number uniquely.

For many strategies, hints and tips, visit SudokuWiki.org

If you like Sudoku you’ll really like ‘Str8ts’ and other puzzles, Apps and books.

Visit Str8ts.com

Previous solution - Medium

2	1	6	4	8	7	3	5	9
3	5	8	2	6	9	7	1	4
4	7	9	5	3	1	6	8	2
6	9	7	8	1	3	4	2	5
8	3	4	7	2	5	9	6	1
5	2	1	9	4	6	8	3	7
1	8	5	3	7	4	2	9	6
7	6	2	1	9	8	5	4	3
9	4	3	6	5	2	1	7	8

FREE \$10 GIFT CARD
Buy a whole turkey, get \$10 free
Offer valid from November 20 – 27, 2019
Medford Food Coop
Open Daily 7 to 9
945 S Riverside Ave
(541)779-2667
medfordfood.coop

CRATERIAN PERFORMANCES PRESENTS



THE JAMES COLLIER
Gingerbread
JUBILEE

Baking Contest, Benefit Auction & Community Tour
Fri.-Mon., November 22-25
Details online: craterian.org



T M T O
Disney
FROZEN JR.

Frozen Jr. sponsored by Lithia 4 Kids & Wells Fargo
TMTTO season sponsored by Hunter Communications

December 14-15 & 20-21
All tickets \$15



Tomáseen Foley's
A Celtic Christmas

sponsored exclusively by First Interstate Bank

Sunday, December 22,
3 & 7:30pm
\$32, \$35, \$38, Youth/Students \$22, \$25, \$28



MYSTERY SCIENCE THEATER 3000
LIVE
THE GREAT CHEESY MOVIE CIRCUS TOUR

sponsored by The Rogue Valley RV Messenger

Monday, January 20, 7:30pm
\$39, \$42, \$45



Tickets Make Great

HOLIDAY GIFTS!

JUST A FEW OF OUR 2020 OFFERINGS:

1/25: Classic Albums Live Queen, A Night at the Opera	2/29: Body Vox: Urban Meadow
1/28: The Choir of Man	3/3: The Underwater Bubble Show
2/7: A Cappella LIVE!	...and so much more!
2/12: Cirque Mechanics 42ft.	

Shop at www.craterian.org

CRATERIAN THEATER at
THE COLLIER CENTER
for the Performing Arts

For more details or to purchase tickets: call, click or stop by the Box Office.

541-779-3000 • craterian.org
BOX OFFICE: 16 S. Bartlett
THEATER: 23 S. Central

Signature Sponsor
JED & CELIA
MEESE




[galleryonegp](https://www.instagram.com/galleryonegp)

229 SW G St
541-479-1218



Gallery one

One-of-a-kind Gifts
Affordable Wonders Unique Cards
Gift Certificates Stocking Stuffers
LOCAL ART! Free Gift Wrapping

THE SUMMER AND STEVE SHOW & PHYTONYX PRESENTS

LOUD FLOWERS HIGH GRADE HARVEST BALL

ECHOES OF LIGHT
JAH SUN & THE RISING TIDE
DUBTONIC KRU

SPECIAL GUESTS
ALCYON MASSIVE • SPUNJ • KING THAYO
DJ ADAM THA BAMBU KING

HOSTED BY
COMIC/ACTOR/ACTIVIST **NGAIO BEALUM**

LOCAL VENDORS • RAFFLE PRIZES
JAMAICAN FOOD FROM STONE'S ROOTS AND JUICE

SATURDAY NOVEMBER 9TH 2019
HISTORIC ASHLAND ARMORY

7PM 21+

GENERAL ADMISSION: \$20 ADVANCE TICKETS: MUSIC COOP IN ASHLAND • MUSIC MAN IN MEDFORD & GRANDS PINE
\$45 PLATINUM TICKET INCLUDES MEET AND GREET PHOTO OP WITH THE BAND, BAND T-SHIRT, SHARED POSTER

Heard from Ashland to Rogue River and from the Mountain Lakes to Applegate



community radio

89.5 fm 94.1
ashland medford

541-482-3999 | 330 E Hersey St #2 | Ashland, OR

Broadcasting in the Rogue Valley on 89.5 and 94.1 FM and Streaming to the World at kskq.org

Alternative News, Local Public Affairs, Americana, Blues, Jazz, Rock, Reggae, World and so much more!

Listen to Democracy Now, with Amy Goodman. Monday - Friday at Noon